

THE **atria**
AT BUSINESS BAY

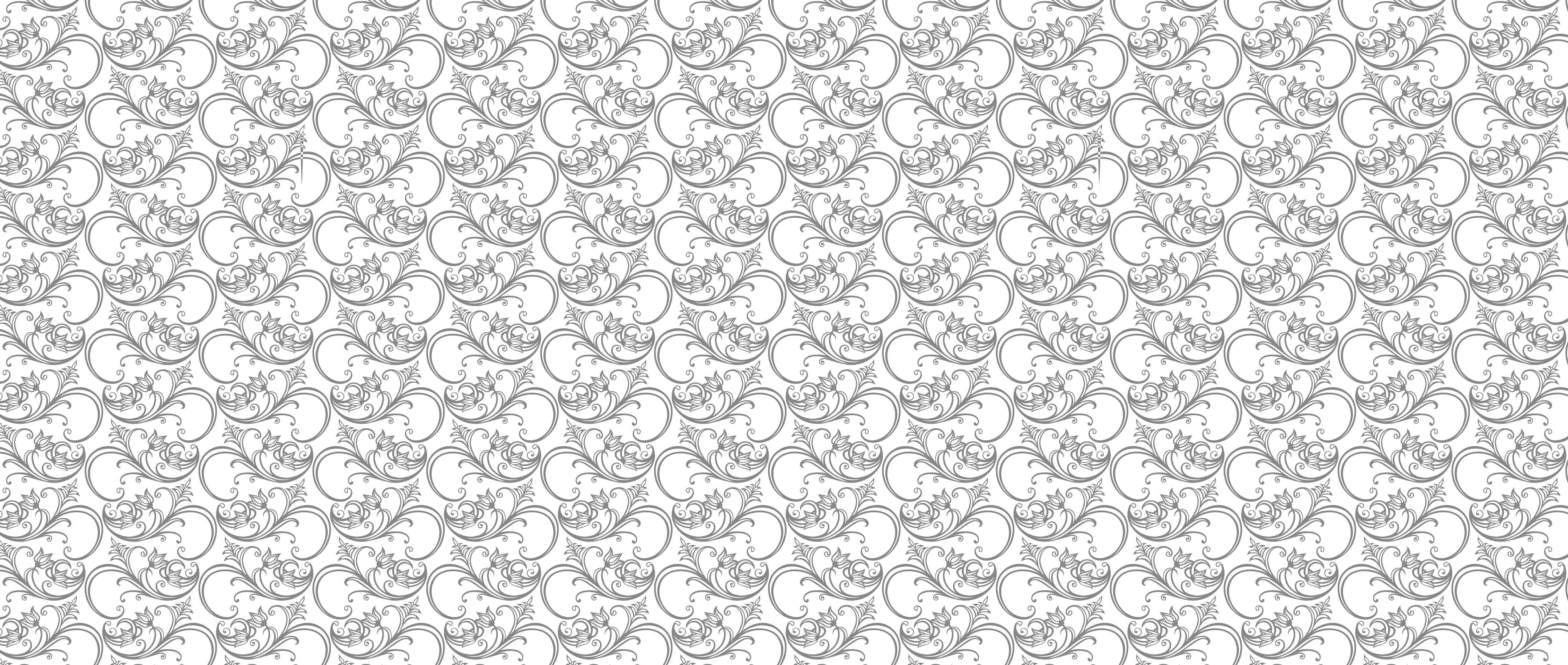
H O T E L A P A R T M E N T S

DEVELOPED BY



دييار
DEYAAR





Luxury
by the *bay*





Welcome to Dubai

City of dreams, Dubai, is at the helm of new beginnings and newer prospects for a better lifestyle.

Clinching a remarkable win at the Expo 2020 bid, the city is preparing itself for a glorious global reception. Earning international repute for housing some of the world's most iconic architectural marvels such as the Burj Khalifa and the Burj Al Arab, Dubai is also growing to be a grand canvas for progressive urban development.

Welcome to the success story that is Dubai.

The Developers

DEYAAR'S VISION

Marking its foray in to Dubai's real estate industry in 2002, Deyaar has grown exponentially over the past decade to become one of the leading real estate development companies in the region.

Along the way, the company has invested great efforts to align its objectives with the greater vision of Dubai. Joining the development course to the Expo 2020, Deyaar aims to deliver world-class projects and services that add value to Dubai's property landscape.

With a strong foothold in Dubai's prominent commercial business district, Business Bay, Deyaar has additionally ventured in to major growth corridors and prime locations in the city, including Dubai Marina, Al Barsha, Dubai International Financial Centre, Jumeirah Lake Towers, International Media Production Zone, Dubai Silicon Oasis and TECOM.





The Lakes by yoo, Cotswolds, yoo Studio



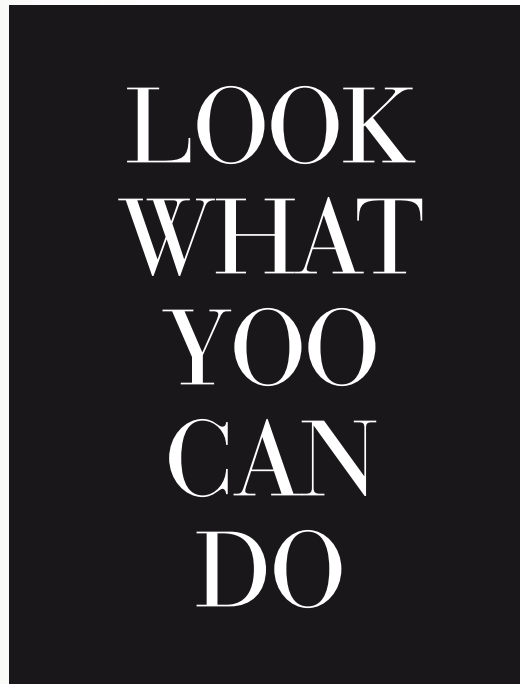
yoo Residences, Hong Kong, yoo Studio



Sans Souci, Vienna, yoo Studio



Sans Souci, Vienna, yoo Studio



The Lakes by yoo, Cotswolds, yoo Studio



yoo Residences, Hong Kong, yoo Studio



Residences, Delhi, yoo Studio

The Designer

“yoo - a company founded by John Hitchcox and Philippe Starck”

The yoo Studio is a dynamic design house with experience of cutting-edge design in over 27 countries. Serving the yoo tribe internationally, the studio has created landmark signature residences and hotels alongside collaborations with yoo Creative Directors. This gives yoo Studio a unique design DNA that could only come from working with the world's leading design visionaries.

The yoo Studio's experience is enhanced by its diversity of over 20 architects, interior and product designers with big imaginations, providing a choice of looks and styles to suit the lifestyles of today's modern dwellers. They only source the best quality fittings and furniture from around the world to create interiors that are imaginative, rare and individual - just like you.

All images for illustrative purposes only.

YOO STUDIO COMES FROM YOO

yoo is a collaboration of ideas; the experience of the world's most celebrated designer, Philippe Starck, matched with the vision of the international property entrepreneur John Hitchcox.

These two leaders in their field came together with a single ground breaking concept: to harness the creative diversity of Starck, with the innovative buildings developed by Hitchcox.

The idea is yoo.

yoo designs extraordinary places, allowing people to buy functional, brilliantly designed homes.

WHERE ARE YOO?

yoo is synonymous with luxury property in prime locations across the globe.



John Hitchcox

"Hitchcox is the Miuccia Prada of the property industry, he knows how we want to live before we do", Independent on Sunday



Philippe Starck

"Starck is the most celebrated designer in the world", Sunday Times



The Atria at Business Bay

Welcome to a living experience called The Atria

Where convenience meets the luxury of living by the bay, this address is designed to house all your desires. And with contemporary hotel apartments, elegant residential units and thoughtful amenities, this living address is the hallmark of the good life.

The Atria comprises of a hotel apartment tower and a 30-storey residential tower, sharing a common podium that constitutes luxurious 3-bedroom duplex apartments, a retail arena and a central park-plaza atrium. The individuality of this lifestyle experience comes from the iconic step-terrace structure, creating a memorable form and an aesthetic façade.

The Inspiration

Standing on the forecourt of life, there's very little that actually matters to us.
The sun. The birds. The people. The sound of water.

The yearning to breakaway from the clockwork of our everyday lives has only
drawn us closer to nature. And this difference between merely existing and living
is what makes all the difference. A reason enough to be inspired and watch life
as it happens.

A life full of colours and lights. Of space and liberation. Of water and tranquility.

Life by the bay.

Location



Located in Business Bay, the business capital of Dubai, The Atria enjoys conveniences of
a centrally-located residence. Business Bay is also one of the most cosmopolitan areas of Dubai,
with the world's tallest tower, Burj Khalifa in its neighbourhood. Living at The Atria promises you
enticing views of this iconic structure, the Business Bay canal and the scenic Dubai Stables.

The Hotel Apartments

Now you can stay in Business Bay at The Atria in luxurious hotel apartments, designed by yoo Studio.

- Studio Units
- One-bedroom Units
- Two-bedroom Units
- Three-bedroom Units
- Three-bedroom Duplex Units

Every apartment has a characteristic personality and flair, with a key focus on simplicity, functionality and urban elegance paired with the latest smart home technology. Designed by yoo Studio, a company founded by John Hitchcox and Philippe Starck.



The Hotel Operator

The Atria Hotel Apartments will be managed by global hotel operator Millenium & Copthorne Hotels, a dynamic global hotel company that owns, asset manages and/or operates over 120 hotels worldwide. With almost 40,000 rooms around the world, and a portfolio of brands that serve different market segments, Millennium & Copthorne is committed to a customer-centric philosophy to deliver the highest levels of service to its guests.

Millennium & Copthorne, Middle East & Africa (MEA) is now recognised as one of the fastest growing hotel management companies in the region. Millennium & Copthorne (MEA) currently operates 26 hotels and aims to have 100 properties in its network by 2020.



The Atria: Bedroom



Lobby



Living Room



Bedroom



Kitchen



Bathroom

Live in Culture

The apartments at The Atria are designed in the yoo Studio Culture Style. Eclectic yet refined, the Culture palette encapsulates a passion for appropriating the most beautiful and exquisitely produced objects and ideas from the past, and placing them alongside the most amazing designs of today. The result is an intriguing mix with a captivating tension. Rooted in richness and boldness, the Culture palette has a powerful sense of history, but is always looking forward.

Finishings are indicative and are subject to change.

Finishes

At The Atria, you have the luxury to choose from a range of Furnishing, Bathroom and Kitchen finishes, carefully selected by the yoo Studio. It's all about you.



Calacatta porcelain marble effect tile for
bathrooms and living room



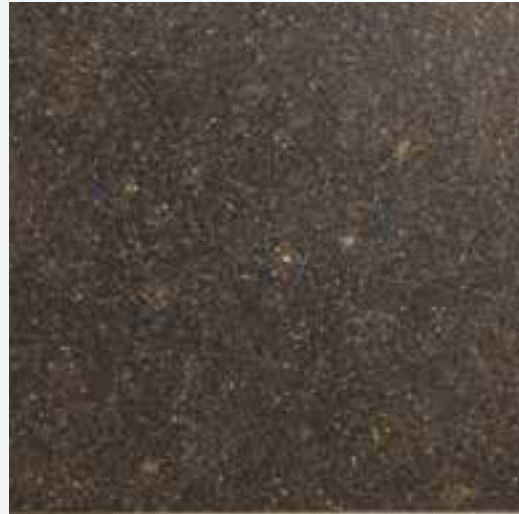
Porcelain wood effect tile



Furniture and doors in black american walnut



Champagne coloured mirror for back splash and
large full height mirrors



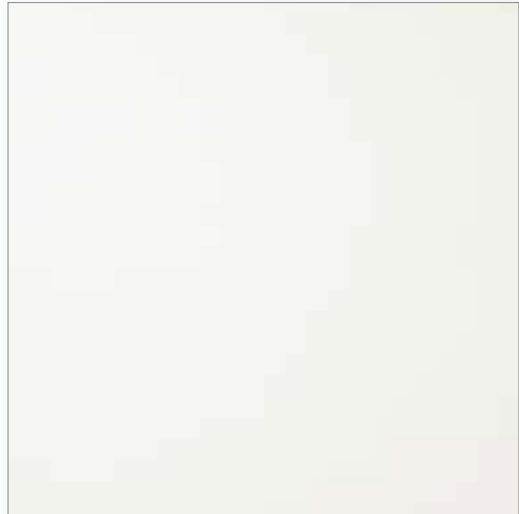
Porcelain tiles in black for bathroom borders and
maid's room floor



Black silestone for kitchen work surface



Polished brass for furniture detailing



White lacquer RAL 9010 for paint colour on
plaster walls



The Atria: Bathroom



The Atria: Kitchen



Echo Brickell, Miami, yoo Studio
Developed by PMC

The Amenities

The Amenities at The Atria hotel apartments are designed to enhance the way you live, providing all the design-led conveniences the most discerning of guests could wish for.

HOTEL AMENITIES

- Elegantly designed Studio, 1, 2, 3-bedroom & 3-bedroom duplex units
- Views of the Burj Khalifa, Business Bay canal and the Dubai Stables
- 25th level - Infinity Pool that overlooks the Burj Khalifa and Business Bay
- 5-star Spa
- Gymnasium
- Fine Dining Restaurants
- Visitor Parking Spaces

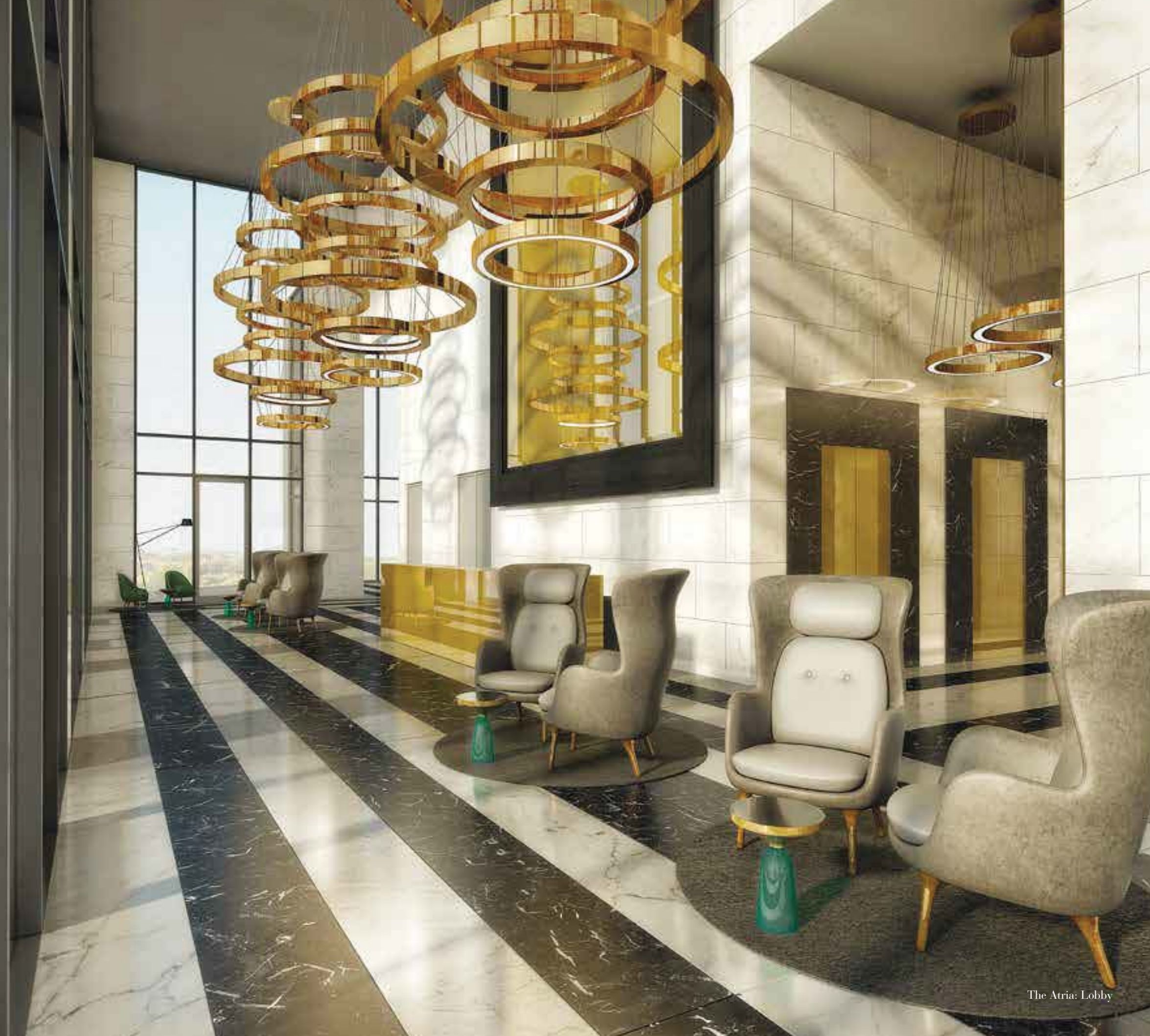
All images for illustrative purposes only.

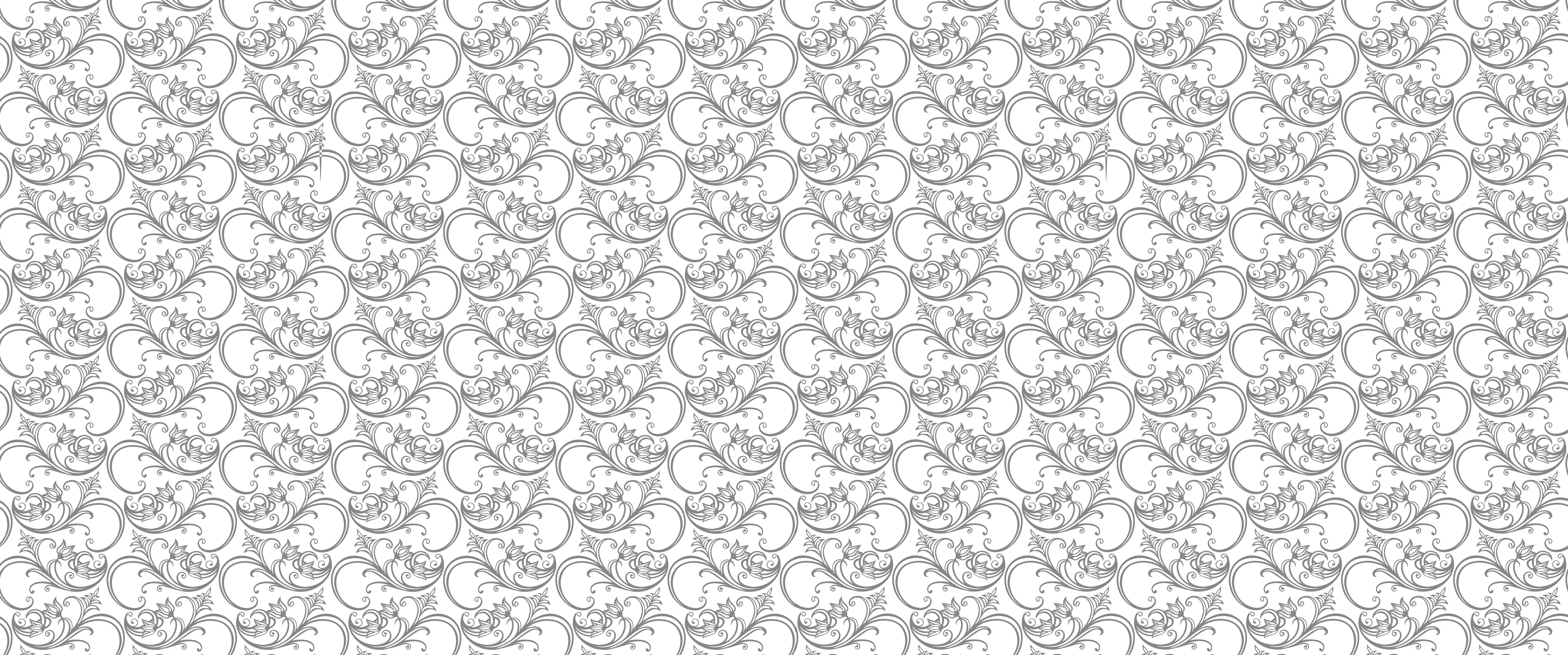
Design-led Living

PLAZA & RETAIL AREA

With a park ambience, boutique retail outlets and the choicest variety of restaurants, this central atrium makes for a convenient plaza level. The retail arena is designed keeping in mind the community aspect of this living address. The retail outlets are double-height in structure, allowing access from both the Ground Level and the Mezzanine Level. So while there are people shopping for the things they need, there is enough room for people to socialise in the community they live in. Apart from the retail arena, there is an appetising menu of multi-cuisine restaurants that serve delectable dishes for the shoppers and residents.

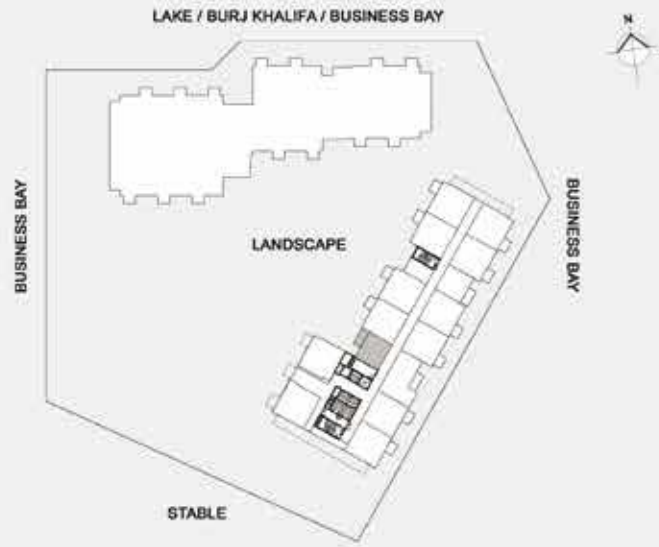
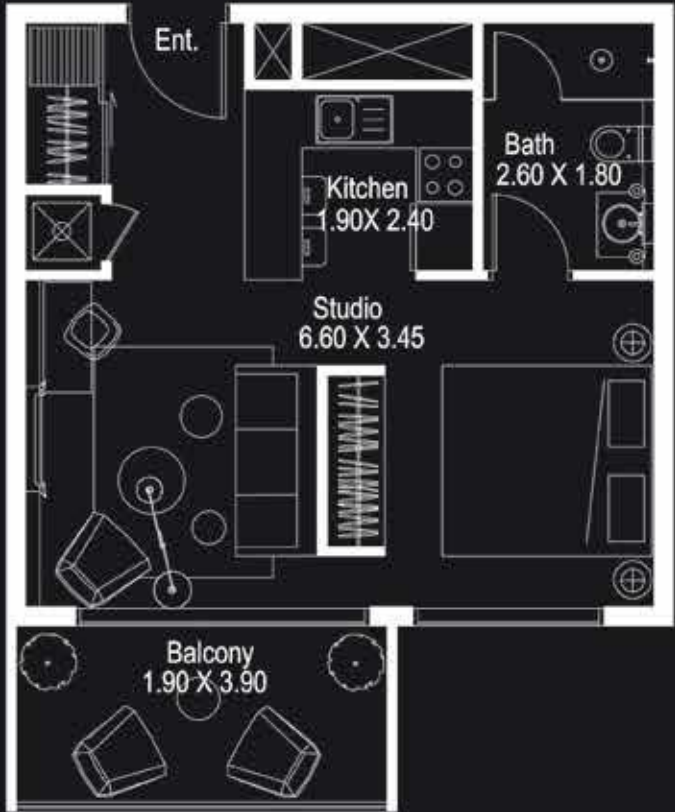
- Dedicated retail area of about 11,000 sq. ft.
- 9 Retail Shops
- Exclusive F&B Outlets
- Fine dining restaurant of about 3,000 sq. ft.
in addition to similar area of charming landscaped terrace





*Floor
plans*

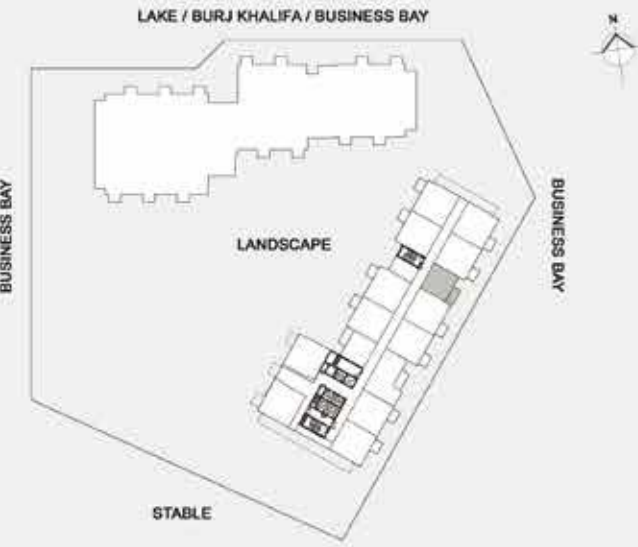
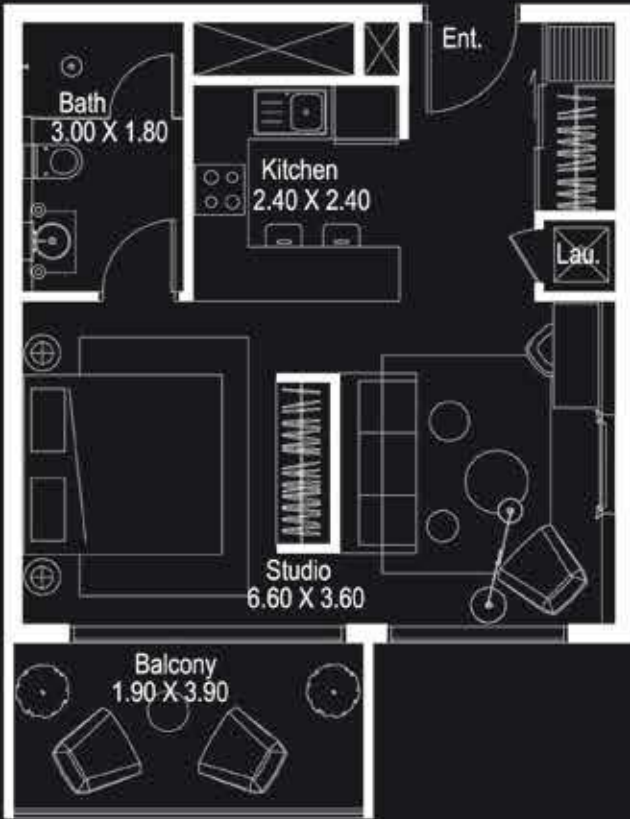
STUDIO APARTMENT - TYPE ST1



ST1						
Unit No.	Levels	Views	Actual Area Sq.ft.			Total Nos.
			Suite	Balcony	Total	
213	2	Landscape / Business Bay	470.06	95.26	565.32	1
313	3	Landscape / Business Bay	470.06	90.96	561.02	1
413	4	Landscape / Business Bay	470.06	95.26	565.32	1
513	5	Landscape / Business Bay	470.06	90.96	561.02	1
613	6	Landscape / Business Bay	470.06	95.26	565.32	1
713	7	Landscape / Business Bay	470.06	90.96	561.02	1
813	8	Landscape / Business Bay	470.06	95.26	565.32	1
913	9	Landscape / Business Bay	470.06	90.96	561.02	1
1013	10	Landscape / Business Bay	470.06	95.26	565.32	1
1113	11	Landscape / Business Bay	470.06	90.96	561.02	1
1213	12	Landscape / Business Bay	470.06	95.26	565.32	1
1313	13	Landscape / Business Bay	470.06	90.96	561.02	1
1413	14	Landscape / Business Bay	470.06	95.26	565.32	1
1513	15	Landscape / Business Bay	470.06	90.96	561.02	1
1613	16	Landscape / Business Bay	470.06	95.26	565.32	1
1713	17	Landscape / Business Bay	470.06	90.96	561.02	1
1809	18	Landscape / Business Bay	470.06	95.26	565.32	1
1909	19	Landscape / Business Bay	470.06	90.96	561.02	1
2009	20	Landscape / Business Bay	470.06	95.26	565.32	1
2109	21	Landscape / Business Bay	470.06	90.96	561.02	1
2209	22	Landscape / Business Bay	470.06	95.26	565.32	1
2309	23	Landscape / Business Bay	470.06	90.96	561.02	1
Total Type ST1						22

* Leasable area and Balcony location may vary from floor to floor.
* Furniture, Wardrobe and Bath Fixtures are indicative and may vary.

STUDIO APARTMENT - TYPE ST2



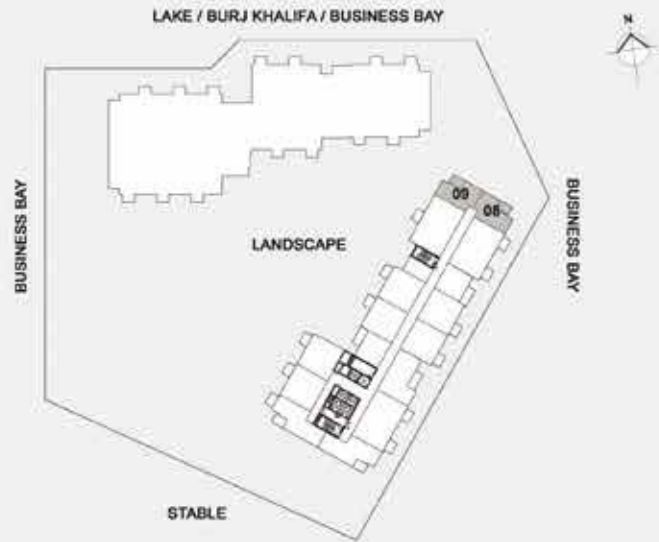
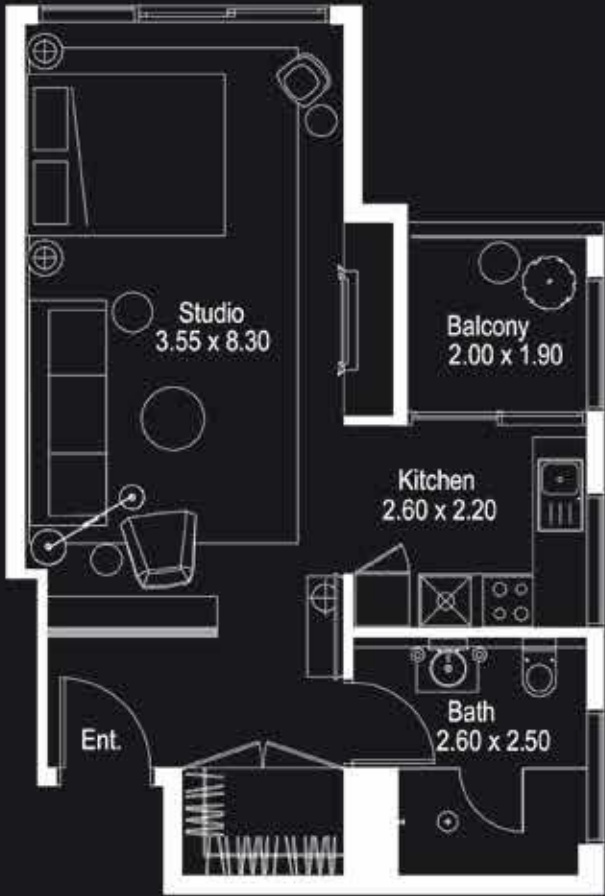
ST2						
Unit No.	Levels	Views	Actual Area Sq.ft.			Total Nos.
			Suite	Balcony	Total	
206	2	Stable / Business Bay	493.20	95.26	588.46	1
306	3	Stable / Business Bay	493.20	95.26	588.46	1
406	4	Stable / Business Bay	493.20	95.26	588.46	1
506	5	Stable / Business Bay	493.20	89.88	583.08	1
606	6	Stable / Business Bay	493.20	95.26	588.46	1
706	7	Stable / Business Bay	493.20	89.88	583.08	1
806	8	Stable / Business Bay	493.20	95.26	588.46	1
906	9	Stable / Business Bay	493.20	89.88	583.08	1
1006	10	Stable / Business Bay	493.20	95.26	588.46	1
1106	11	Stable / Business Bay	493.20	89.88	583.08	1
1206	12	Stable / Business Bay	493.20	95.26	588.46	1
1306	13	Stable / Business Bay	493.20	89.88	583.08	1
1406	14	Stable / Business Bay	493.20	95.26	588.46	1
1506	15	Stable / Business Bay	493.20	89.88	583.08	1
1606	16	Stable / Business Bay	493.20	95.26	588.46	1
1706	17	Stable / Business Bay	493.20	89.88	583.08	1
1806	18	Stable / Business Bay	500.63	95.26	595.89	1
1906	19	Stable / Business Bay	500.63	89.88	590.51	1
Total Type ST2						18

* Leasable area and Balcony location may vary from floor to floor.
* Furniture, Wardrobe and Bath Fixtures are indicative and may vary.

ST1 22 Nos. (2nd to 23rd Floor)

ST2 18 Nos. (2nd to 19th Floor)

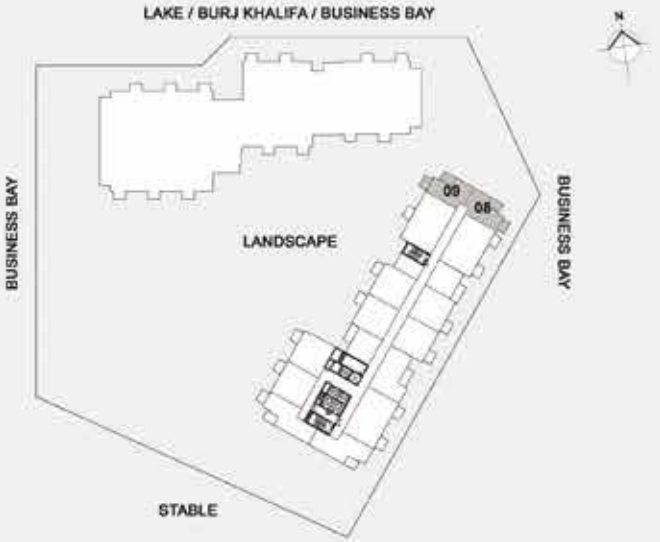
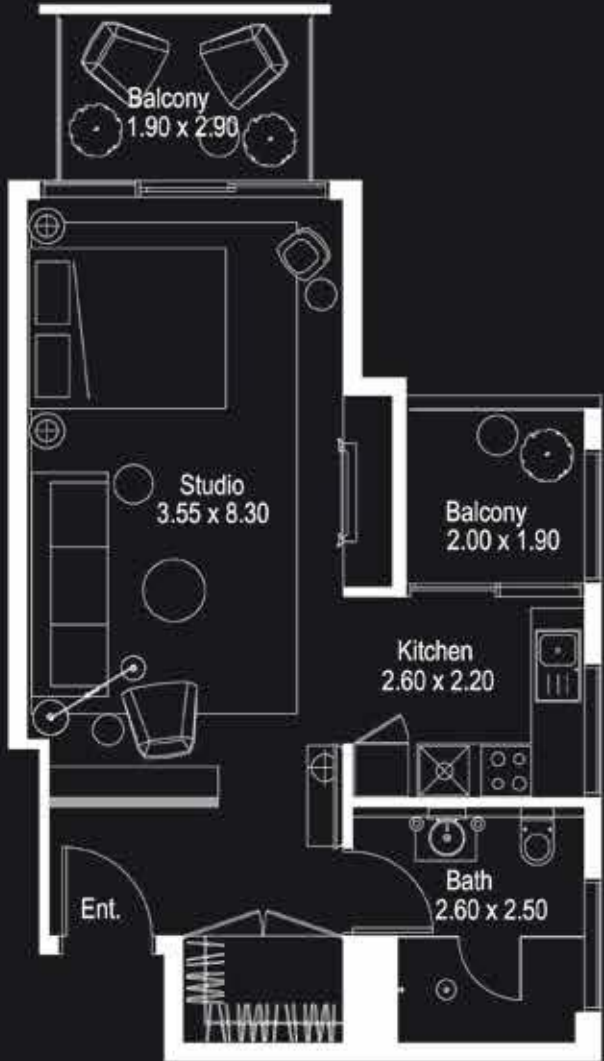
STUDIO APARTMENT - TYPE ST3



ST3						
Unit No.	Levels	Views	Actual Area Sq Ft.			Total Nos.
			Suite	Balcony	Total	
838	4	Stable / Lake / Burj Khalifa / Business Bay	531.00	78.90	612.90	1
529	5	Landscape / Lake / Burj Khalifa / Business Bay	530.12	78.90	609.02	1
938	6	Stable / Lake / Burj Khalifa / Business Bay	534.00	78.90	612.90	1
725	7	Landscape / Lake / Burj Khalifa / Business Bay	530.12	78.90	609.02	1
808	8	Stable / Lake / Burj Khalifa / Business Bay	534.00	78.90	612.90	1
929	9	Landscape / Lake / Burj Khalifa / Business Bay	530.12	78.90	609.02	1
1008	10	Stable / Lake / Burj Khalifa / Business Bay	534.00	78.90	612.90	1
1109	11	Landscape / Lake / Burj Khalifa / Business Bay	530.12	78.90	609.02	1
1208	12	Stable / Lake / Burj Khalifa / Business Bay	534.00	78.90	612.90	1
1309	13	Landscape / Lake / Burj Khalifa / Business Bay	530.12	78.90	609.02	1
1408	14	Stable / Lake / Burj Khalifa / Business Bay	534.00	78.90	612.90	1
1509	15	Landscape / Lake / Burj Khalifa / Business Bay	530.12	78.90	609.02	1
1608	16	Stable / Lake / Burj Khalifa / Business Bay	534.00	78.90	612.90	1
Total Type ST3						13

* Leasable area and Balcony location may vary from floor to floor.
* Furniture, Wardrobe and Bath Fixtures are indicative and may vary.

STUDIO APARTMENT - TYPE ST4



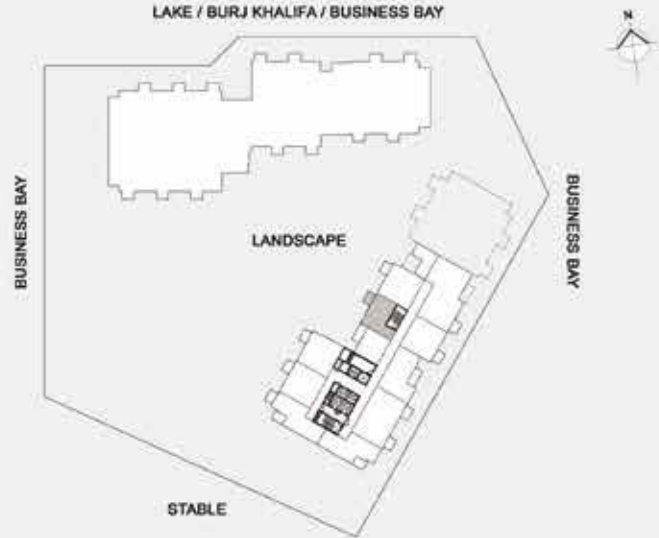
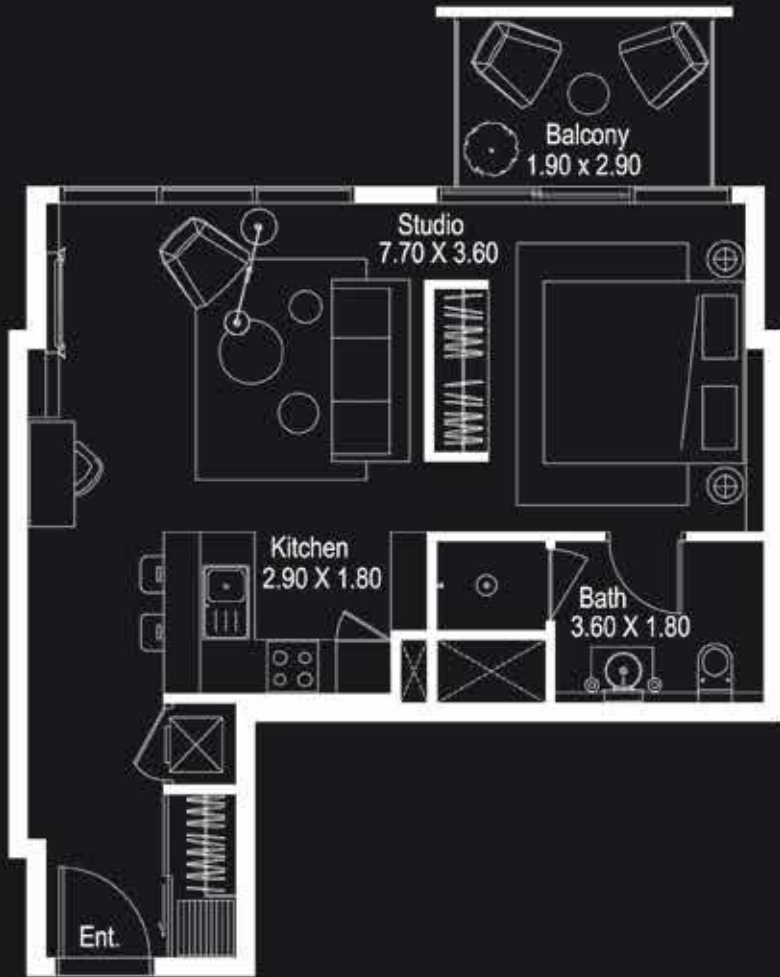
ST4						
Unit No.	Levels	Views	Actual Area Sq Ft.			Total Nos.
			Suite	Balcony	Total	
429	4	Landscape / Lake / Burj Khalifa / Business Bay	530.12	135.18	669.30	1
528	5	Stable / Lake / Burj Khalifa / Business Bay	534.00	135.18	673.17	1
629	6	Landscape / Lake / Burj Khalifa / Business Bay	530.12	135.18	669.30	1
728	7	Stable / Lake / Burj Khalifa / Business Bay	534.00	135.18	673.17	1
829	8	Landscape / Lake / Burj Khalifa / Business Bay	530.12	135.18	669.30	1
928	9	Stable / Lake / Burj Khalifa / Business Bay	534.00	135.18	673.17	1
1029	10	Landscape / Lake / Burj Khalifa / Business Bay	530.12	135.18	669.30	1
1128	11	Stable / Lake / Burj Khalifa / Business Bay	534.00	135.18	673.17	1
1229	12	Landscape / Lake / Burj Khalifa / Business Bay	530.12	135.18	669.30	1
1328	13	Stable / Lake / Burj Khalifa / Business Bay	534.00	135.18	673.17	1
1429	14	Landscape / Lake / Burj Khalifa / Business Bay	530.12	135.18	669.30	1
1528	15	Stable / Lake / Burj Khalifa / Business Bay	534.00	135.18	673.17	1
1629	16	Landscape / Lake / Burj Khalifa / Business Bay	530.12	135.18	669.30	1
Total Type ST4						13

* Leasable area and Balcony location may vary from floor to floor.
* Furniture, Wardrobe and Bath Fixtures are indicative and may vary.

ST3 13 Nos. (4th to 16th Floor)

ST4 13 Nos. (4th to 16th Floor)

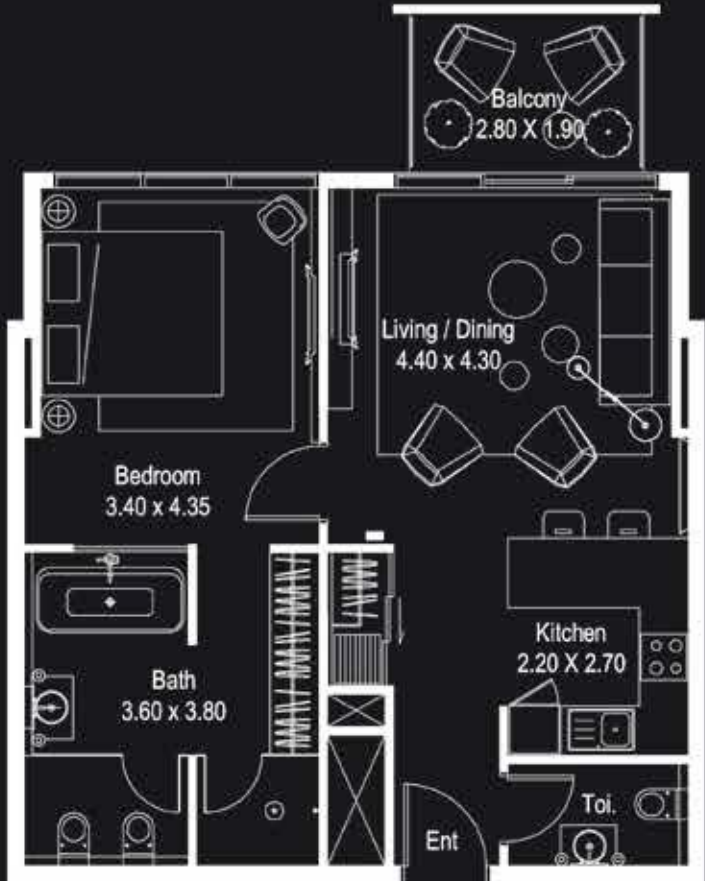
STUDIO APARTMENT - TYPE ST5



ST5						
Unit No.	Levels	Views	Actual Area Sq. Ft.			Total Nos.
			Suite	Balcony	Total	
2007	20	Landscape / Business Bay	577.50	60.28	637.78	1
2107	21	Landscape / Business Bay	577.50	60.28	637.78	1
2207	22	Landscape / Business Bay	577.50	60.28	637.78	1
2307	23	Landscape / Business Bay	577.50	60.28	637.78	1
Total Type ST5						4

* Leasable area and Balcony location may vary from floor to floor.
* Furniture, Wardrobe and Bath Fixtures are indicative and may vary.

ONE BEDROOM APARTMENT - TYPE 1A1



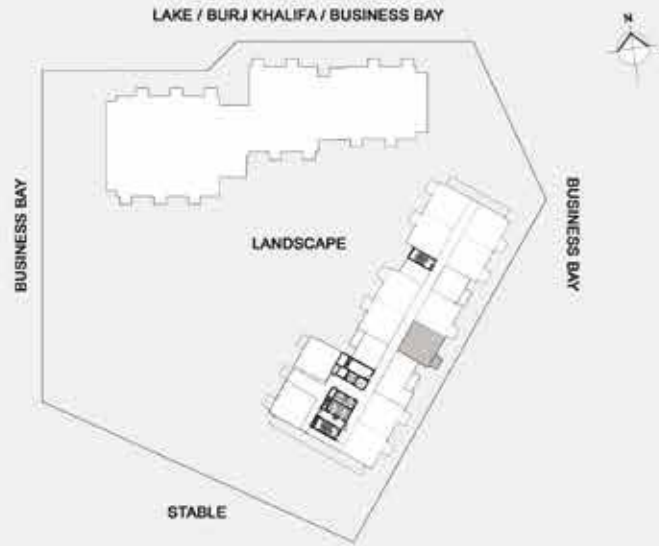
1A1						
Unit No.	Levels	Views	Area Sq. Ft.			Total Nos.
			Suite	Balcony	Total	
212	2	Landscape / Business Bay	748.74	60.28	809.02	1
312	3	Landscape / Business Bay	748.74	60.28	809.02	1
412	4	Landscape / Business Bay	748.74	60.28	809.02	1
512	5	Landscape / Business Bay	748.74	60.28	809.02	1
612	6	Landscape / Business Bay	748.74	60.28	809.02	1
712	7	Landscape / Business Bay	748.74	60.28	809.02	1
812	8	Landscape / Business Bay	748.74	60.28	809.02	1
912	9	Landscape / Business Bay	748.74	60.28	809.02	1
1012	10	Landscape / Business Bay	748.74	60.28	809.02	1
1112	11	Landscape / Business Bay	748.74	60.28	809.02	1
1212	12	Landscape / Business Bay	748.74	60.28	809.02	1
1312	13	Landscape / Business Bay	748.74	60.28	809.02	1
1412	14	Landscape / Business Bay	748.74	60.28	809.02	1
1512	15	Landscape / Business Bay	748.74	60.28	809.02	1
1612	16	Landscape / Business Bay	748.74	60.28	809.02	1
1712	17	Landscape / Business Bay	748.74	60.28	809.02	1
1808	18	Landscape / Business Bay	748.74	60.28	809.02	1
Total Type 1A1						17

* Leasable area and Balcony location may vary from floor to floor.
* Furniture, Wardrobe and Bath Fixtures are indicative and may vary.

ST5 4 Nos. (20th to 23rd Floor)

1A1 17 Nos. (2nd to 18th Floor)

ONE BEDROOM APARTMENT - TYPE 1A1



1A1						
Unit No.	Levels	Views	Area Sq.Ft.			Total Nos.
			Suite	Balcony	Total	
204	2	Stable / Business Bay	748.74	60.28	809.02	1
304	3	Stable / Business Bay	748.74	60.28	809.02	1
404	4	Stable / Business Bay	748.74	60.28	809.02	1
504	5	Stable / Business Bay	748.74	60.28	809.02	1
604	6	Stable / Business Bay	748.74	60.28	809.02	1
704	7	Stable / Business Bay	748.74	60.28	809.02	1
804	8	Stable / Business Bay	748.74	60.28	809.02	1
904	9	Stable / Business Bay	748.74	60.28	809.02	1
1004	10	Stable / Business Bay	748.74	60.28	809.02	1
1104	11	Stable / Business Bay	748.74	60.28	809.02	1
1204	12	Stable / Business Bay	748.74	60.28	809.02	1
1304	13	Stable / Business Bay	748.74	60.28	809.02	1
1404	14	Stable / Business Bay	748.74	60.28	809.02	1
1504	15	Stable / Business Bay	748.74	60.28	809.02	1
1604	16	Stable / Business Bay	748.74	60.28	809.02	1
1704	17	Stable / Business Bay	748.74	60.28	809.02	1
1804	18	Stable / Business Bay	748.74	60.28	809.02	1
1904	19	Stable / Business Bay	748.74	60.28	809.02	1
2004	20	Stable / Business Bay	748.74	60.28	809.02	1
2104	21	Stable / Business Bay	748.74	60.28	809.02	1
2204	22	Stable / Business Bay	748.74	60.28	809.02	1
2304	23	Stable / Business Bay	748.74	60.28	809.02	1
Total Type 1A1						22

* Leasable area and Balcony location may vary from floor to floor.
* Furniture, Wardrobe and Bath Fixtures are indicative and may vary.

ONE BEDROOM APARTMENT - TYPE 1A2



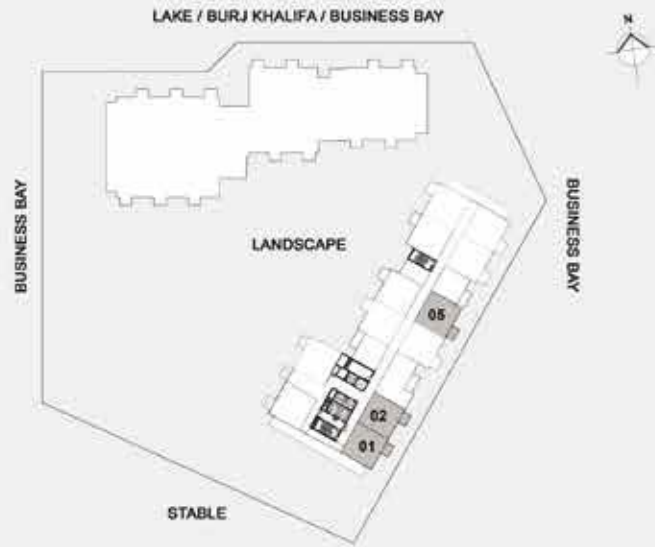
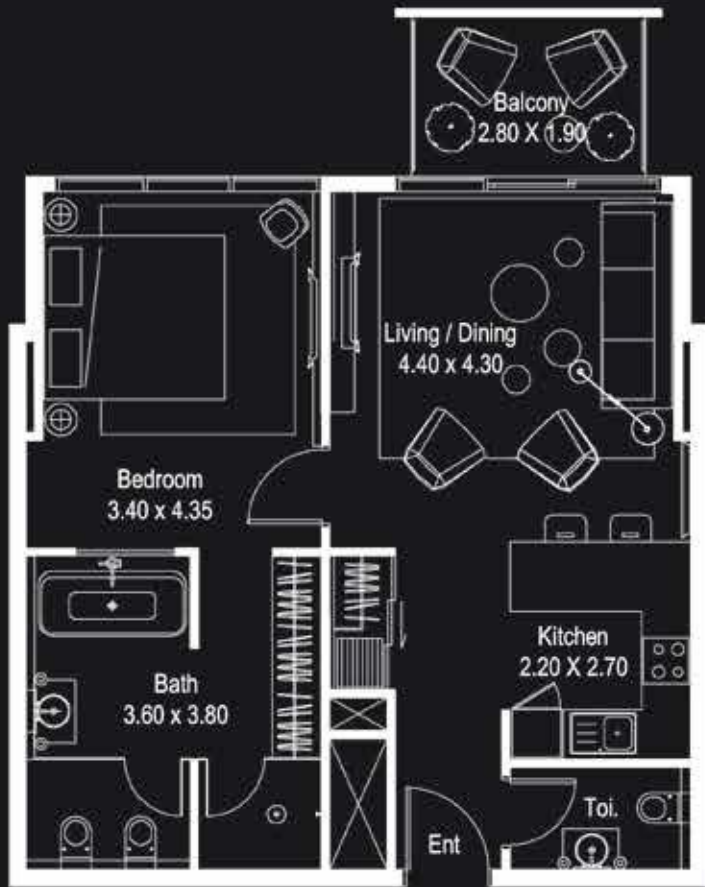
1A2						
Unit No.	Levels	Views	Actual Area Sq.Ft.			Total Nos.
			Suite	Balcony	Total	
210	2	Landscape / Business Bay	759.93	60.28	820.21	1
211	2	Landscape / Business Bay	760.36	60.28	820.64	1
310	3	Landscape / Business Bay	759.93	60.28	820.21	1
411	4	Landscape / Business Bay	760.36	60.28	820.64	1
611	6	Landscape / Business Bay	760.36	60.28	820.64	1
811	8	Landscape / Business Bay	760.36	60.28	820.64	1
1011	10	Landscape / Business Bay	760.36	60.28	820.64	1
1211	12	Landscape / Business Bay	760.36	60.28	820.64	1
1411	14	Landscape / Business Bay	760.36	60.28	820.64	1
1611	16	Landscape / Business Bay	760.36	60.28	820.64	1
1710	17	Landscape / Business Bay	759.93	60.28	820.21	1
1907	19	Landscape / Business Bay	760.36	60.28	820.64	1
2006	20	Landscape / Business Bay	760.36	60.28	820.64	1
2206	22	Landscape / Business Bay	760.79	60.28	821.07	1
2306	23	Landscape / Business Bay	760.79	60.28	821.07	1
Total Type 1A2						15

* Leasable area and Balcony location may vary from floor to floor.
* Furniture, Wardrobe and Bath Fixtures are indicative and may vary.

1A1 22 Nos. (2nd to 23rd Floor)

1A2 15 Nos. (2nd, 3rd, 4th, 6th, 8th, 10th, 12th, 14th, 16th, 17th, 18th, 20th, 22nd & 23rd Floor)

ONE BEDROOM APARTMENT - TYPE 1A2



1A2						
Unit No.	Levels	Views	Actual Area Sq.Ft.			Total Nos.
			Suite	Balcony	Total	
201	2	Stable / Business Bay	762.84	60.28	823.12	1
202	2	Stable / Business Bay	762.52	60.28	822.79	1
205	2	Stable / Business Bay	763.70	60.28	823.98	1
301	3	Stable / Business Bay	762.84	60.28	823.12	1
302	3	Stable / Business Bay	762.52	60.28	822.79	1
305	3	Stable / Business Bay	763.70	60.28	823.98	1
405	4	Stable / Business Bay	763.70	60.28	823.98	1
505	5	Stable / Business Bay	763.70	60.28	823.98	1
605	6	Stable / Business Bay	763.70	60.28	823.98	1
705	7	Stable / Business Bay	763.70	60.28	823.98	1
805	8	Stable / Business Bay	763.70	60.28	823.98	1
905	9	Stable / Business Bay	763.70	60.28	823.98	1
1005	10	Stable / Business Bay	763.70	60.28	823.98	1
1105	11	Stable / Business Bay	763.70	60.28	823.98	1
1205	12	Stable / Business Bay	763.70	60.28	823.98	1
1305	13	Stable / Business Bay	763.70	60.28	823.98	1
1405	14	Stable / Business Bay	763.70	60.28	823.98	1
1505	15	Stable / Business Bay	763.70	60.28	823.98	1
1605	16	Stable / Business Bay	763.70	60.28	823.98	1
1705	17	Stable / Business Bay	763.70	60.28	823.98	1
1805	18	Stable / Business Bay	763.70	60.28	823.98	1
1905	19	Stable / Business Bay	763.70	60.28	823.98	1
2205	22	Stable / Business Bay	763.70	60.28	823.98	1
2305	23	Stable / Business Bay	762.84	60.28	823.12	1
2602	26	Stable / Business Bay	762.52	60.28	822.79	1
Total Type 1A2						25

* Leasable area and Balcony location may vary from floor to floor.
* Furniture, Wardrobe and Bath Fixtures are indicative and may vary.

ONE BEDROOM APARTMENT - TYPE 1A3



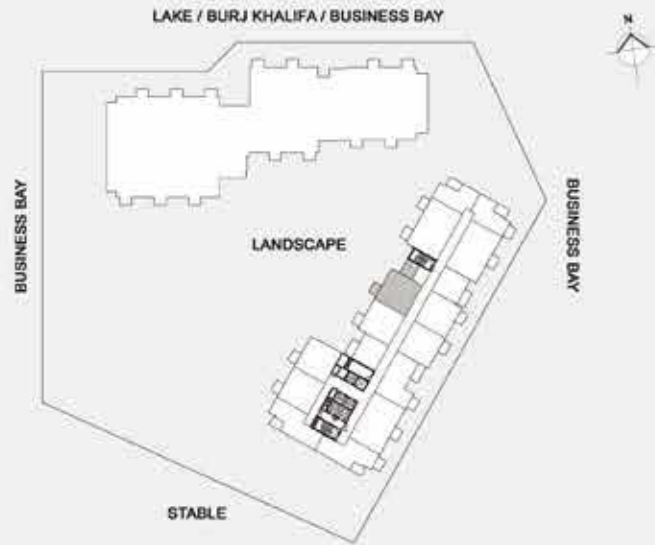
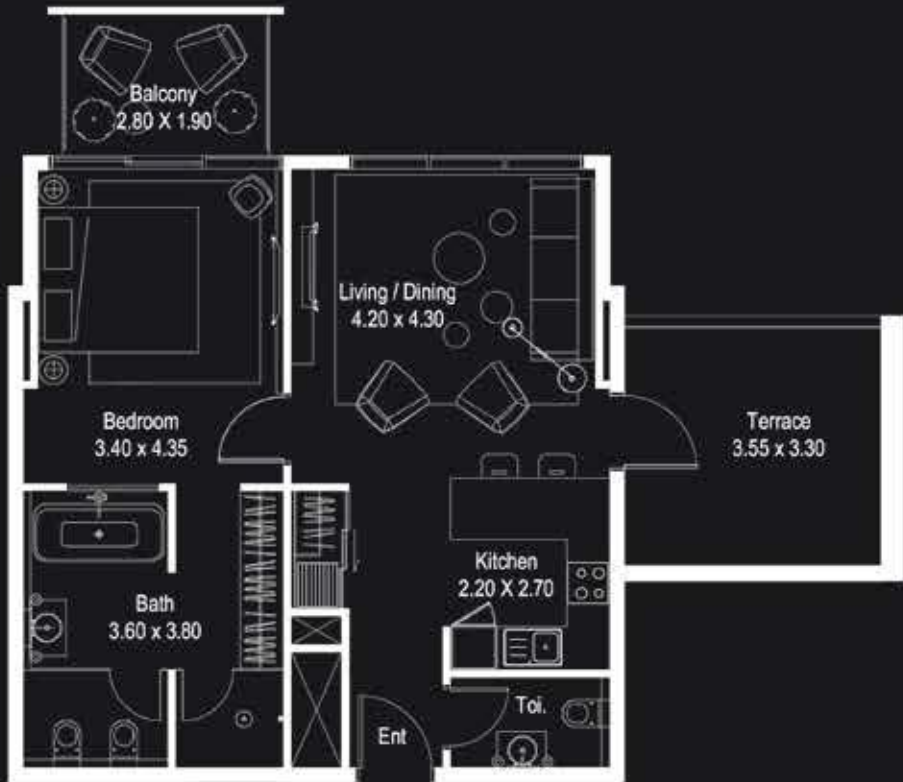
1A3						
Unit No.	Levels	Views	Actual Area Sq.Ft.			Total Nos.
			Suite	Balcony	Total	
207	2	Stable / Business Bay	767.14	60.28	827.42	1
208	2	Stable / Lake / Burj Khalifa / Business Bay	765.31	60.28	825.59	1
209	2	Landscape / Lake / Burj Khalifa / Business Bay	765.74	60.28	826.02	1
307	3	Stable / Business Bay	767.14	60.28	827.42	1
308	3	Lake / Burj Khalifa / Business Bay	765.31	60.28	825.59	1
309	3	Landscape / Lake / Burj Khalifa / Business Bay	765.74	60.28	826.02	1
1707	17	Stable / Business Bay	767.14	60.28	827.42	1
Total Type 1A3						7

* Leasable area and Balcony location may vary from floor to floor.
* Furniture, Wardrobe and Bath Fixtures are indicative and may vary.

1A2 25 Nos. (2nd to 19th, 22nd, 23rd & 26th Floor)

1A3 7 Nos. (2nd, 3rd & 17th Floor)

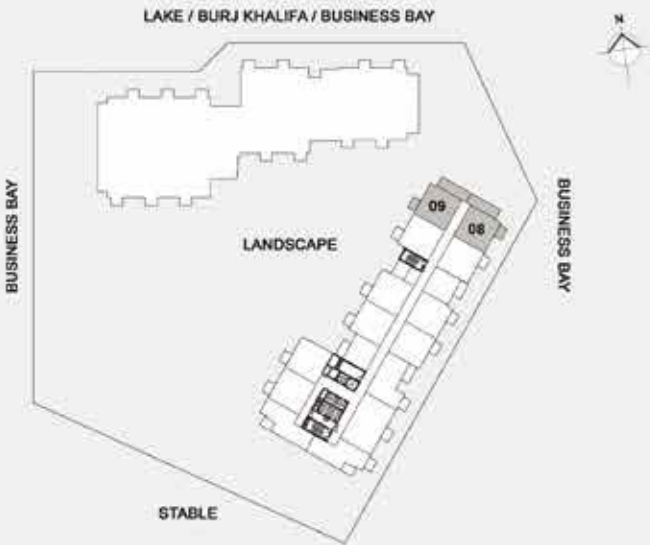
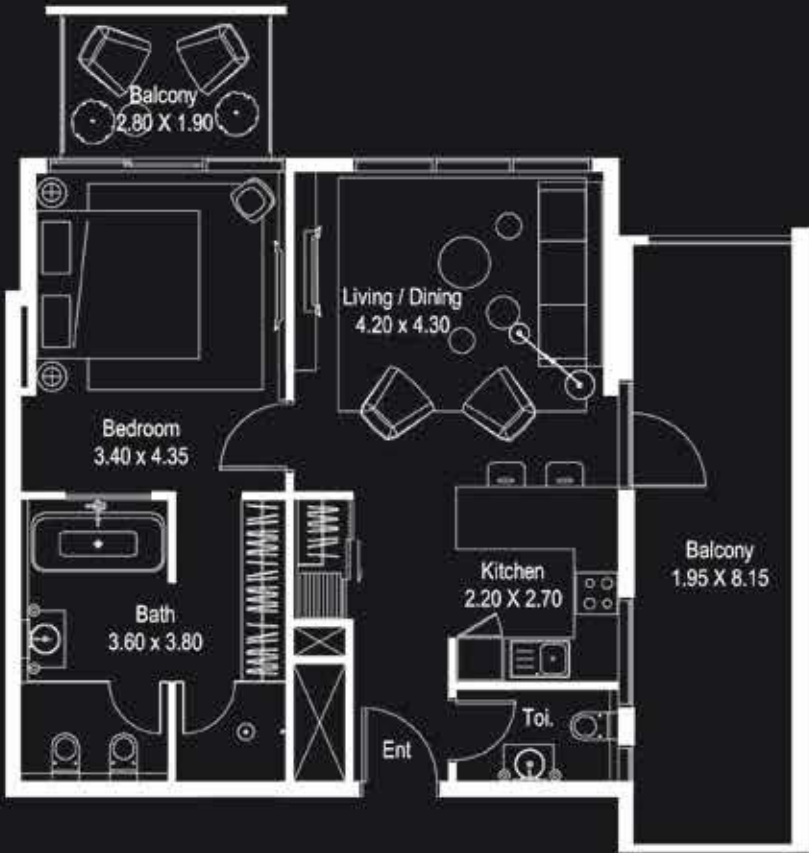
ONE BEDROOM APARTMENT - TYPE 1A4



1A4						
Unit No.	Levels	Views	Actual Area Sq. Ft.			Total Nos.
			Suite	Balcony	Total	
311	3	Landscape / Business Bay	760.36	150.16	910.52	1
511	5	Landscape / Business Bay	760.36	204.84	965.20	1
711	7	Landscape / Business Bay	760.36	204.84	965.20	1
911	9	Landscape / Business Bay	760.36	204.84	965.20	1
1111	11	Landscape / Business Bay	760.36	204.84	965.20	1
1311	13	Landscape / Business Bay	760.36	204.84	965.20	1
1511	15	Landscape / Business Bay	760.36	204.84	965.20	1
1711	17	Landscape / Business Bay	760.36	204.84	965.20	1
Total Type 1A4						8

* Leasable area and Balcony location may vary from floor to floor.
* Furniture, Wardrobe and Bath Fixtures are indicative and may vary.

ONE BEDROOM APARTMENT - TYPE 1A5



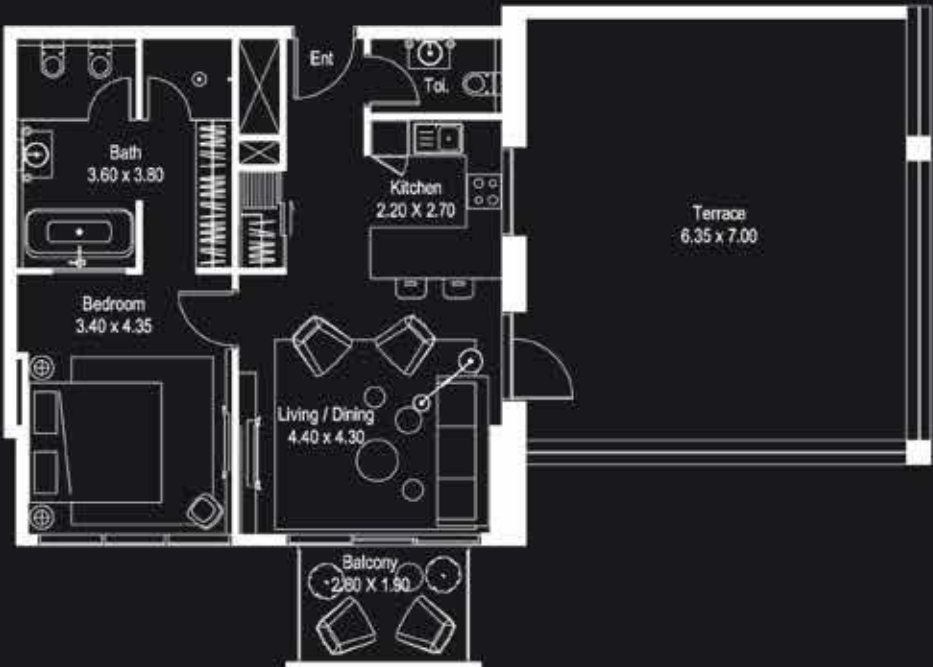
1A5						
Unit No.	Levels	Views	Actual Area Sq. Ft.			Total Nos.
			Suite	Balcony	Total	
1708	17	Stable / Lake / Burj Khalifa / Business Bay	763.81	278.25	1,042.05	1
1709	17	Landscape / Lake / Burj Khalifa / Business Bay	763.81	278.25	1,042.05	1
Total Type 1A5						2

* Leasable area and Balcony location may vary from floor to floor.
* Furniture, Wardrobe and Bath Fixtures are indicative and may vary.

1A4 ■ 8 Nos. (3rd, 5th, 7th, 9th, 11th, 13th, 15th & 17th Floor)

1A5 ■ 2 Nos. (17th Floor)

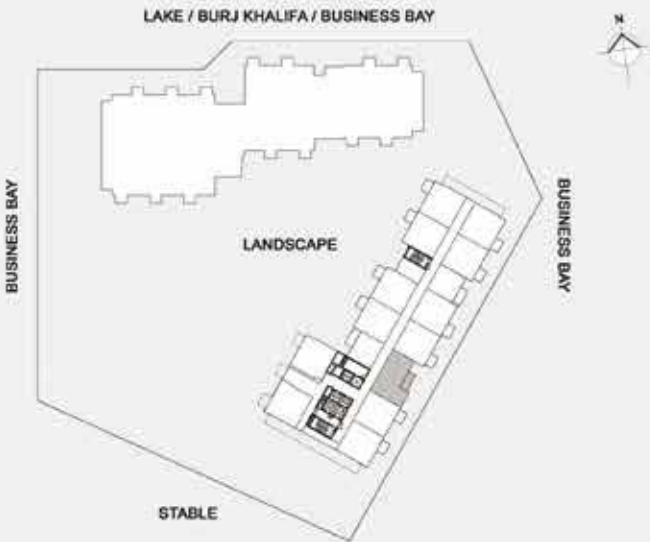
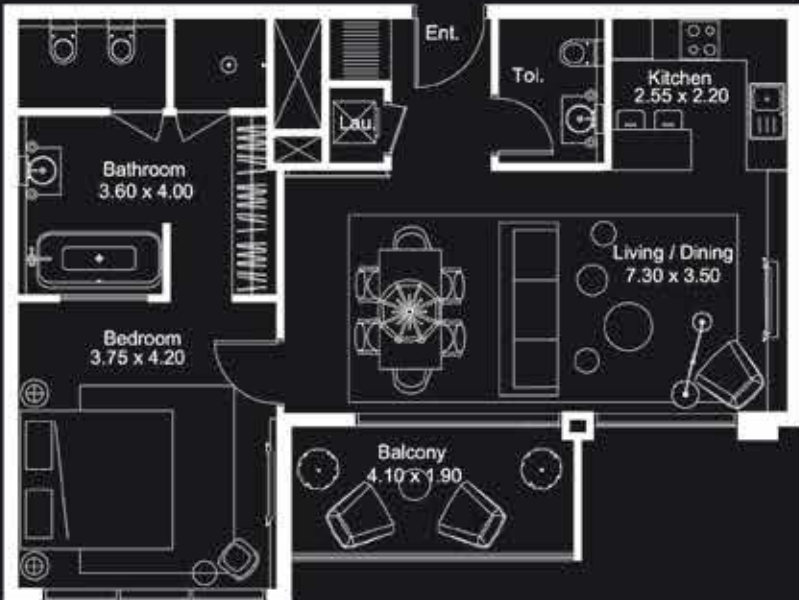
ONE BEDROOM APARTMENT - TYPE 1A6



1A6						
Unit No.	Levels	Views	Actual Area Sq.Ft.			Total Nos.
			Suite	Balcony	Total	
2105	21	Stable / Business Bay	762.94	590.37	1,361.20	1
2106	21	Landscape / Business Bay	760.79	621.72	1,382.52	1
Total Type 1A6						2

* Leasable area and Balcony location may vary from floor to floor.
* Furniture, Wardrobe and Bath Fixtures are indicative and may vary.

ONE BEDROOM APARTMENT - TYPE 1B1



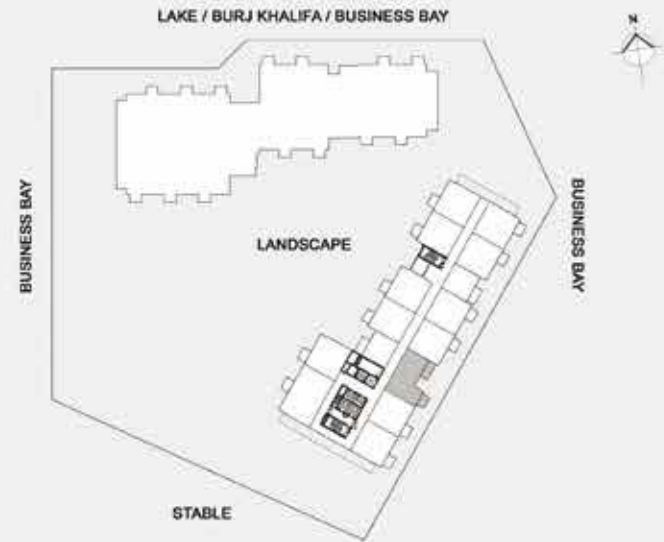
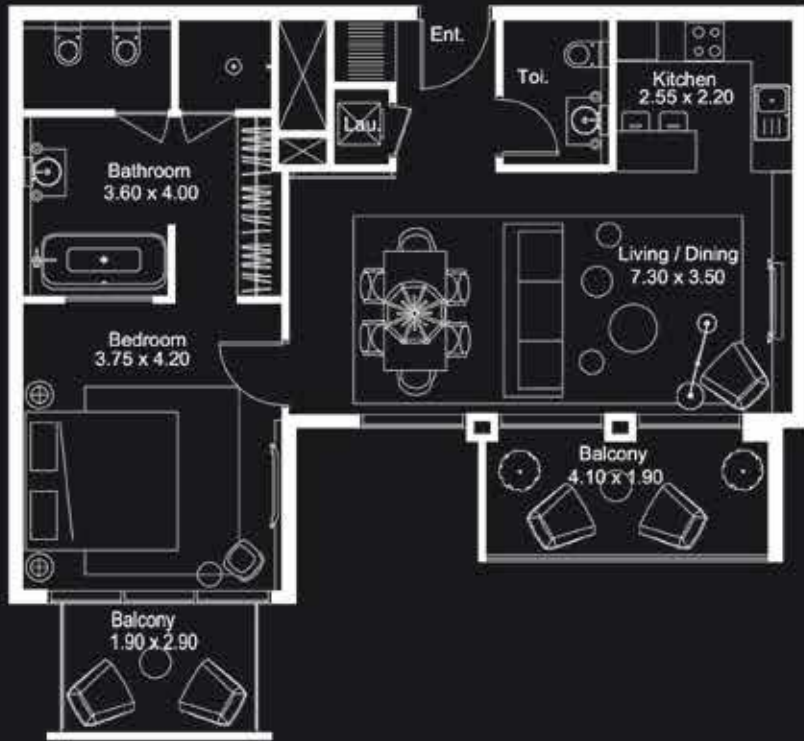
1B1						
Unit No.	Levels	Views	Actual Area Sq.Ft.		Total	Total Nos.
			Suite	Balcony		
203	2	Stable / Business Bay	827.96	95.26	923.22	1
403	4	Stable / Business Bay	827.96	95.26	923.22	1
603	6	Stable / Business Bay	827.96	95.26	923.22	1
803	8	Stable / Business Bay	827.96	95.26	923.22	1
1003	10	Stable / Business Bay	827.96	95.26	923.22	1
1203	12	Stable / Business Bay	827.96	95.26	923.22	1
1403	14	Stable / Business Bay	827.96	95.26	923.22	1
1603	16	Stable / Business Bay	827.96	95.26	923.22	1
1803	18	Stable / Business Bay	827.96	95.26	923.22	1
2003	20	Stable / Business Bay	827.96	95.26	923.22	1
2203	22	Stable / Business Bay	827.96	95.26	923.22	1
2403	24	Stable / Business Bay	827.96	95.26	923.22	1
Total Type 1B1						12

* Leasable area and Balcony location may vary from floor to floor.
* Furniture, Wardrobe and Bath Fixtures are indicative and may vary.

1A6 2 Nos. (21st Floor)

1B1 12 Nos. (2nd, 4th, 6th, 8th, 10th, 12th, 14th, 16th, 18th, 20th, 22nd & 24th Floor)

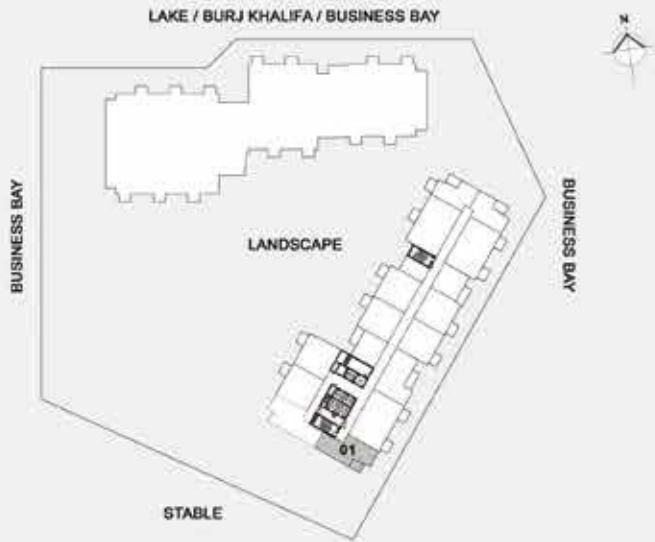
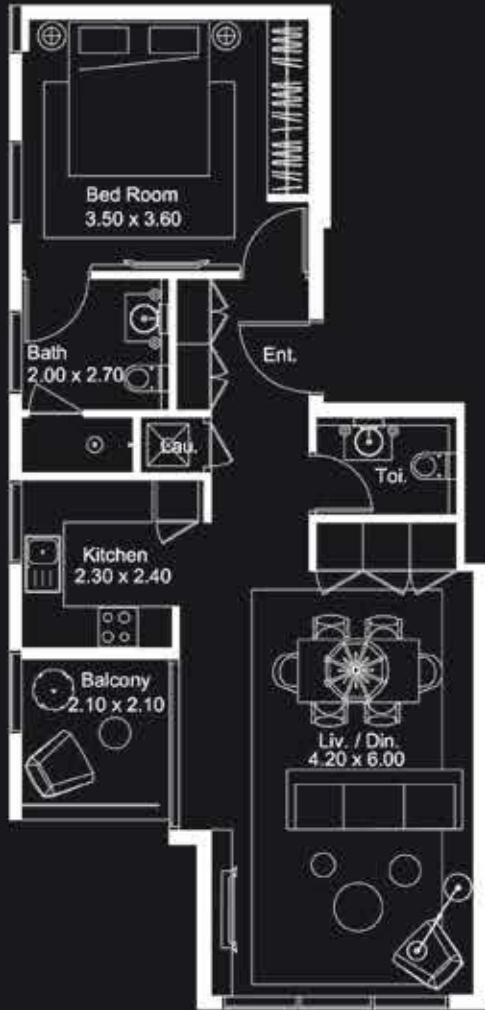
ONE BEDROOM APARTMENT - TYPE 1B2



1B2						
Unit No.	Levels	Views	Actual Area Sq.ft.			Total Nos.
			Suite	Balcony	Total	
303	3	Stable / Business Bay	827.96	155.54	983.50	1
503	5	Stable / Business Bay	827.96	155.54	983.50	1
703	7	Stable / Business Bay	827.96	155.54	983.50	1
903	9	Stable / Business Bay	827.96	155.54	983.50	1
1103	11	Stable / Business Bay	827.96	155.54	983.50	1
1303	13	Stable / Business Bay	827.96	155.54	983.50	1
1503	15	Stable / Business Bay	827.96	155.54	983.50	1
1703	17	Stable / Business Bay	827.96	155.54	983.50	1
1903	19	Stable / Business Bay	827.96	155.54	983.50	1
2103	21	Stable / Business Bay	827.96	155.54	983.50	1
2303	23	Stable / Business Bay	827.96	155.54	983.50	1
Total Type 1B2						11

* Leasable area and Balcony location may vary from floor to floor.
* Furniture, Wardrobe and Bath Fixtures are indicative and may vary.

ONE BEDROOM APARTMENT - TYPE 1C1



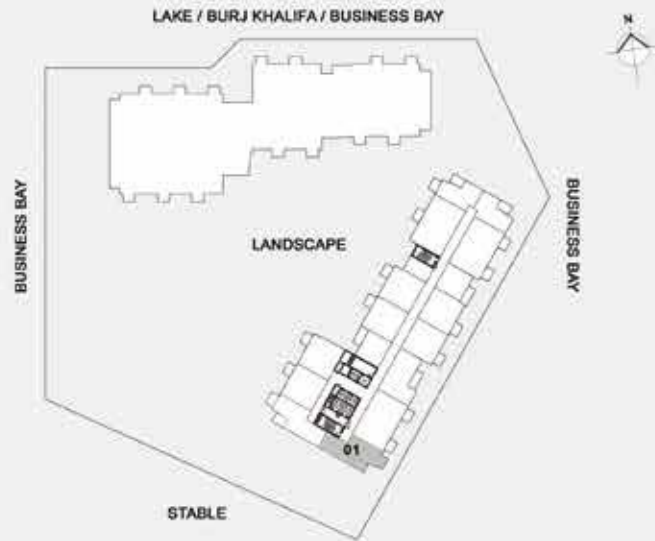
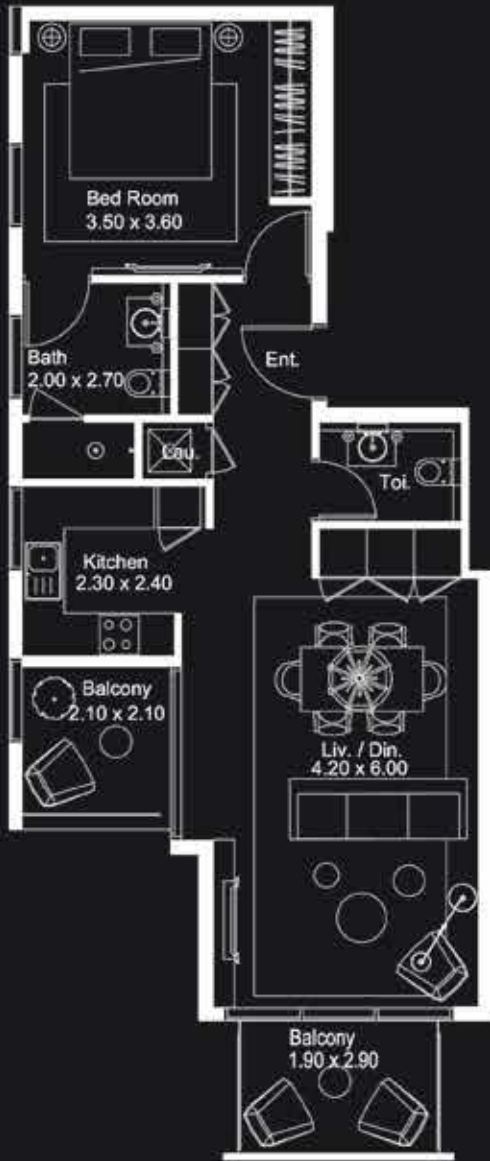
1C1						
Unit No.	Levels	Views	Actual Area Sq.ft.			Total Nos.
			Suite	Balcony	Total	
401	4	Stable / Business Bay	753.69	72.12	825.81	1
601	6	Stable / Business Bay	753.69	72.12	825.81	1
801	8	Stable / Business Bay	753.69	72.12	825.81	1
1001	10	Stable / Business Bay	753.69	72.12	825.81	1
1201	12	Stable / Business Bay	753.69	72.12	825.81	1
1401	14	Stable / Business Bay	753.69	72.12	825.81	1
1601	16	Stable / Business Bay	753.69	72.12	825.81	1
1801	18	Stable / Business Bay	753.69	72.12	825.81	1
2001	20	Stable / Business Bay	753.69	72.12	825.81	1
2201	22	Stable / Business Bay	753.69	72.12	825.81	1
2401	24	Stable / Business Bay	753.69	72.12	825.81	1
2601	26	Stable / Business Bay	753.69	72.12	825.81	1
Total Type 1C1						12

* Leasable area and Balcony location may vary from floor to floor.
* Furniture, Wardrobe and Bath Fixtures are indicative and may vary.

1B2 ■ 11 Nos. (3rd, 5th, 7th, 9th, 11th, 13th, 15th, 17th, 19th, 21st & 23rd Floor)

1C1 ■ 12 Nos. (4th, 6th, 8th, 10th, 12th, 14th, 16th, 18th, 20th, 22nd, 24th & 26th Floor)

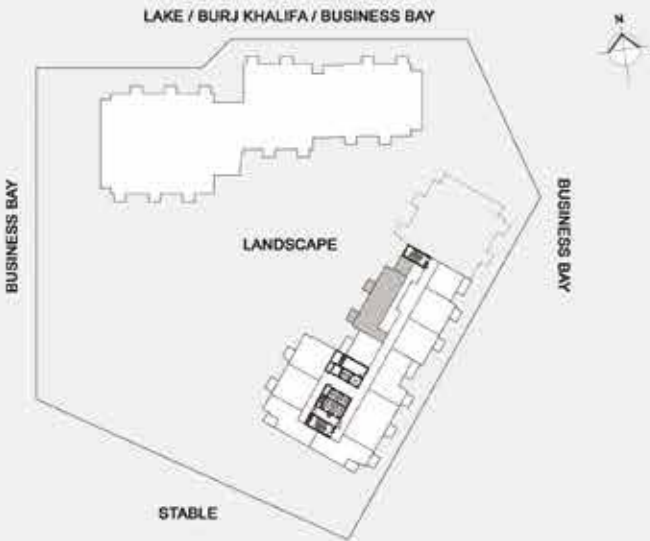
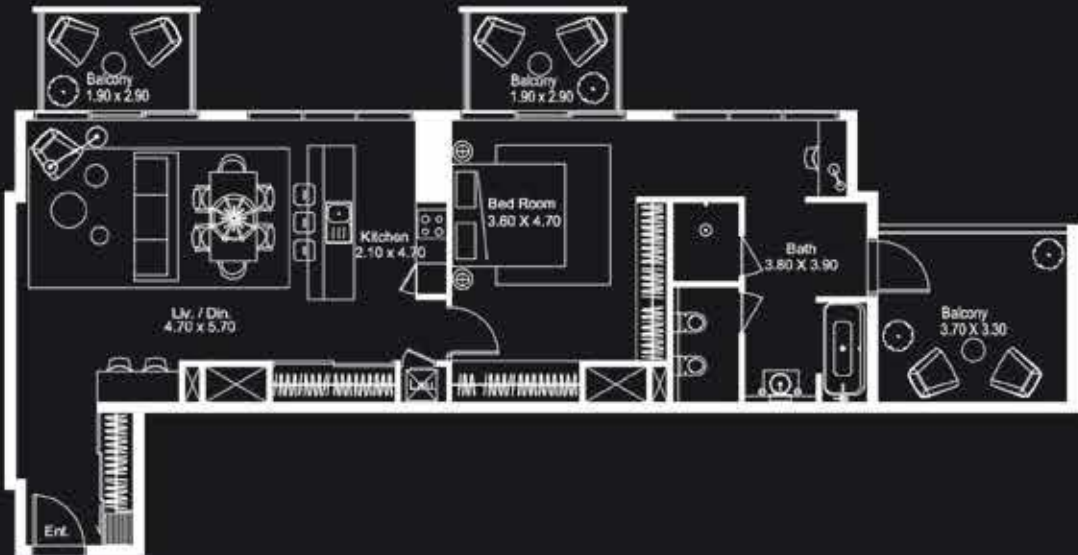
ONE BEDROOM APARTMENT - TYPE 1C2



1C2						
Unit No.	Levels	Views	Actual Area Sq.Ft.			Total Nos.
			Suite	Balcony	Total	
501	5	Stable / Business Bay	753.69	132.83	886.52	1
701	7	Stable / Business Bay	753.69	132.83	886.52	1
901	9	Stable / Business Bay	753.69	132.83	886.52	1
1101	11	Stable / Business Bay	753.69	132.83	886.52	1
1301	13	Stable / Business Bay	753.69	132.83	886.52	1
1501	15	Stable / Business Bay	753.69	132.83	886.52	1
1701	17	Stable / Business Bay	753.69	132.83	886.52	1
1901	19	Stable / Business Bay	753.69	132.83	886.52	1
2101	21	Stable / Business Bay	753.69	132.83	886.52	1
2301	23	Stable / Business Bay	753.69	132.83	886.52	1
2501	25	Stable / Business Bay	753.69	132.83	886.52	1
Total Type 1C2						11

* Leasable area and Balcony location may vary from floor to floor.
* Furniture, Wardrobe and Bath Fixtures are indicative and may vary.

ONE BEDROOM APARTMENT - TYPE 1D1



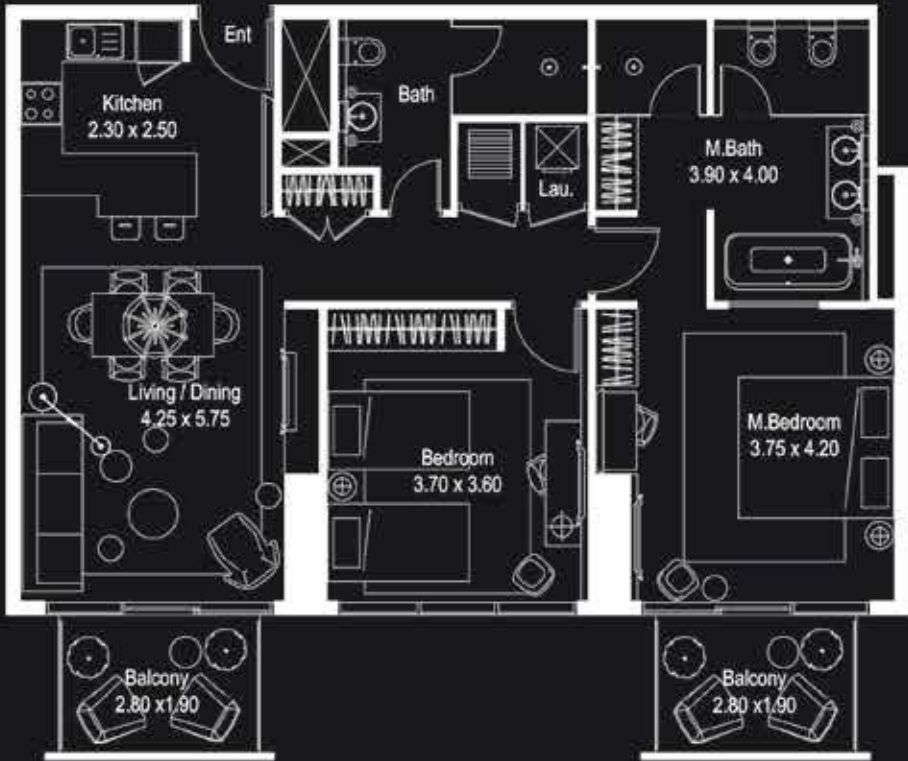
1D1						
Unit No.	Levels	Views	Actual Area Sq.Ft.			Total Nos.
			Suite	Balcony	Total	
1907	19	Landscape / Business Bay	1,080.27	265.12	1,345.38	1
Total Type 1D1						1

* Leasable area and Balcony location may vary from floor to floor.
* Furniture, Wardrobe and Bath Fixtures are indicative and may vary.

1C2 11 Nos. (5th, 7th, 9th, 11th, 13th, 15th, 17th, 19th, 21st, 23rd & 25th Floor)

1D1 1 Nos. (19th Floor)

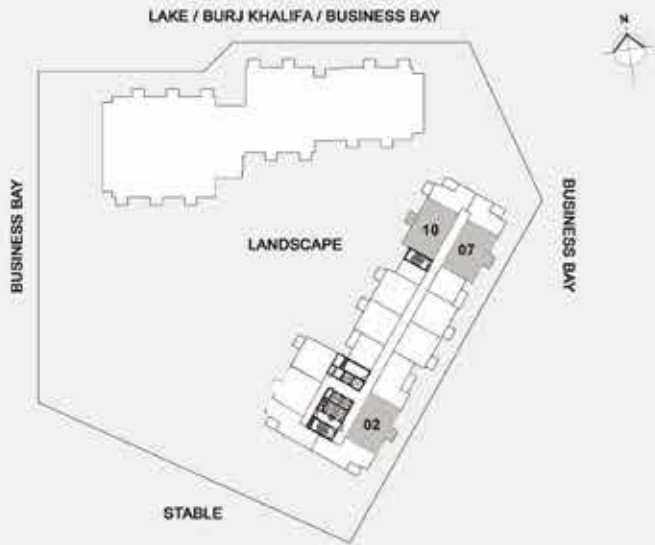
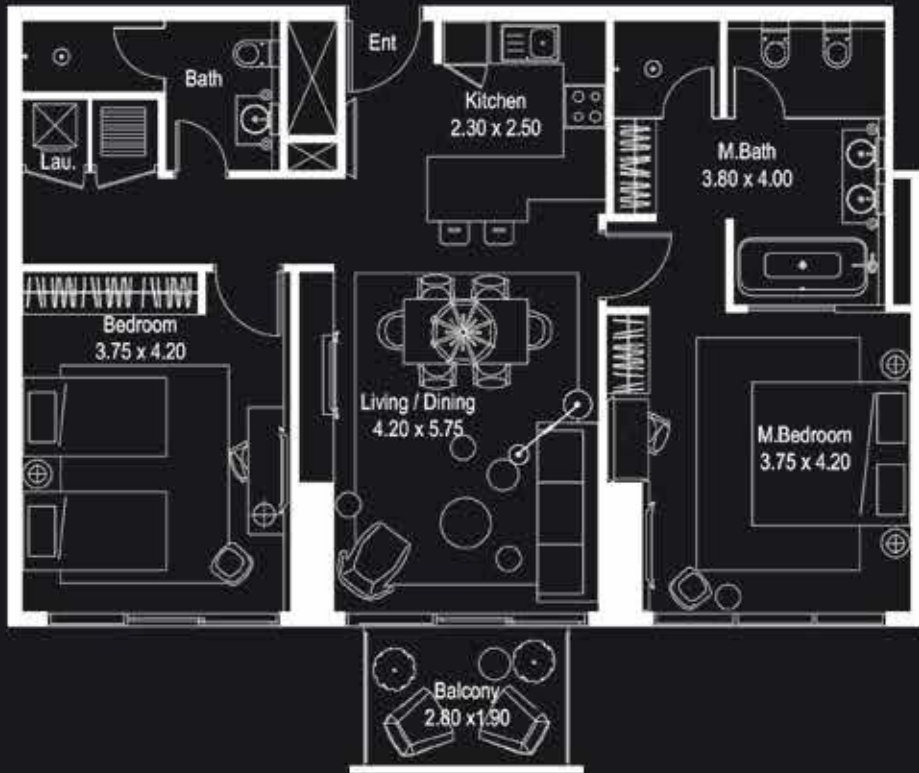
TWO BEDROOM APARTMENT - TYPE 2A1



2A1						
Unit No.	Levels	Views	Actual Area Sq.Ft.			Total Nos.
			Suite	Balcony	Total	
402	4	Stable / Business Bay	1,136.78	120.56	1,257.33	1
407	4	Stable / Business Bay	1,152.71	120.56	1,273.26	1
510	5	Landscape / Business Bay	1,149.37	120.56	1,269.93	1
602	6	Stable / Business Bay	1,136.78	120.56	1,257.33	1
607	6	Stable / Business Bay	1,152.71	120.56	1,273.26	1
710	7	Landscape / Business Bay	1,149.37	120.56	1,269.93	1
802	8	Stable / Business Bay	1,136.78	120.56	1,257.33	1
807	8	Stable / Business Bay	1,152.71	120.56	1,273.26	1
910	9	Landscape / Business Bay	1,149.37	120.56	1,269.93	1
1002	10	Stable / Business Bay	1,136.78	120.56	1,257.33	1
1007	10	Stable / Business Bay	1,152.71	120.56	1,273.26	1
1110	11	Landscape / Business Bay	1,149.37	120.56	1,269.93	1
1202	12	Stable / Business Bay	1,136.78	120.56	1,257.33	1
1207	12	Stable / Business Bay	1,152.71	120.56	1,273.26	1
1310	13	Landscape / Business Bay	1,149.37	120.56	1,269.93	1
1402	14	Stable / Business Bay	1,136.78	120.56	1,257.33	1
1407	14	Stable / Business Bay	1,152.71	120.56	1,273.26	1
1510	15	Landscape / Business Bay	1,149.37	120.56	1,269.93	1
1602	16	Stable / Business Bay	1,136.78	120.56	1,257.33	1
1607	16	Stable / Business Bay	1,152.71	120.56	1,273.26	1
1802	18	Stable / Business Bay	1,136.78	120.56	1,257.33	1
2002	20	Stable / Business Bay	1,136.78	120.56	1,257.33	1
2202	22	Stable / Business Bay	1,136.78	120.56	1,257.33	1
2402	24	Stable / Business Bay	1,136.78	120.56	1,257.33	1
Total Type 2A1						24

* Leasable area and Balcony location may vary from floor to floor.
* Furniture, Wardrobe and Bath Fixtures are indicative and may vary.

TWO BEDROOM APARTMENT - TYPE 2A2



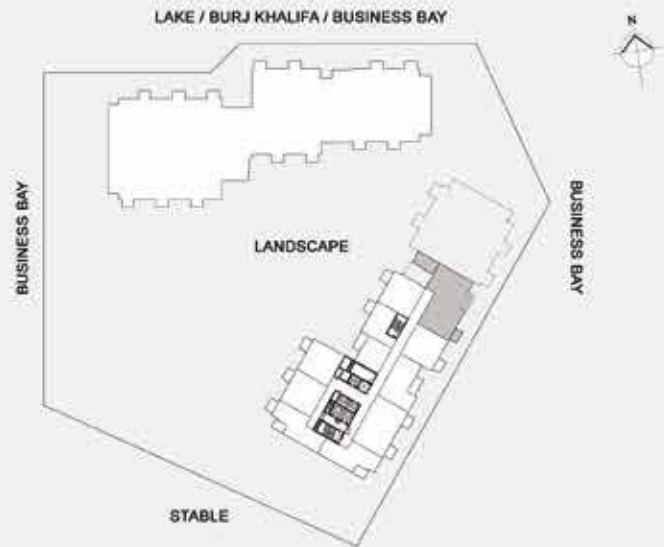
2A2						
Unit No.	Levels	Views	Actual Area Sq.Ft.			Total Nos.
			Suite	Balcony	Total	
410	4	Landscape / Business Bay	1,143.37	60.28	1,203.65	1
502	5	Stable / Business Bay	1,136.78	60.28	1,197.05	1
507	5	Stable / Business Bay	1,152.71	60.28	1,212.99	1
610	6	Landscape / Business Bay	1,143.37	60.28	1,203.65	1
702	7	Stable / Business Bay	1,136.78	60.28	1,197.05	1
707	7	Stable / Business Bay	1,152.71	60.28	1,212.99	1
810	8	Landscape / Business Bay	1,143.37	60.28	1,203.65	1
902	9	Stable / Business Bay	1,136.78	60.28	1,197.05	1
907	9	Stable / Business Bay	1,152.71	60.28	1,212.99	1
1010	10	Landscape / Business Bay	1,143.37	60.28	1,203.65	1
1102	11	Stable / Business Bay	1,136.78	60.28	1,197.05	1
1107	11	Stable / Business Bay	1,152.71	60.28	1,212.99	1
1210	12	Landscape / Business Bay	1,143.37	60.28	1,203.65	1
1302	13	Stable / Business Bay	1,136.78	60.28	1,197.05	1
1307	13	Stable / Business Bay	1,152.71	60.28	1,212.99	1
1410	14	Landscape / Business Bay	1,143.37	60.28	1,203.65	1
1502	15	Stable / Business Bay	1,136.78	60.28	1,197.05	1
1507	15	Stable / Business Bay	1,152.71	60.28	1,212.99	1
1610	16	Landscape / Business Bay	1,143.37	60.28	1,203.65	1
1702	17	Stable / Business Bay	1,136.78	60.28	1,197.05	1
1902	19	Stable / Business Bay	1,136.78	60.28	1,197.05	1
2102	21	Stable / Business Bay	1,136.78	60.28	1,197.05	1
2302	23	Stable / Business Bay	1,136.78	60.28	1,197.05	1
Total Type 2A2						23

* Leasable area and Balcony location may vary from floor to floor.
* Furniture, Wardrobe and Bath Fixtures are indicative and may vary.

2A1 24 Nos. (4th to 16th, 18th, 20th, 22nd & 24th Floor)

2A2 23 Nos. (4th to 17th, 19th, 21st & 23rd Floor)

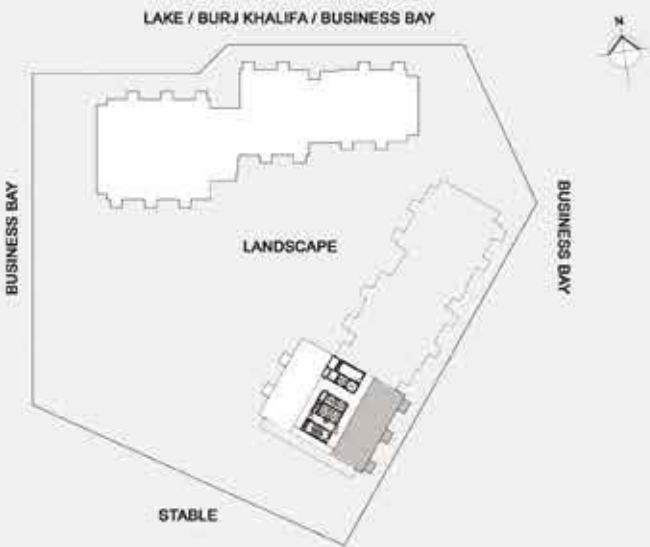
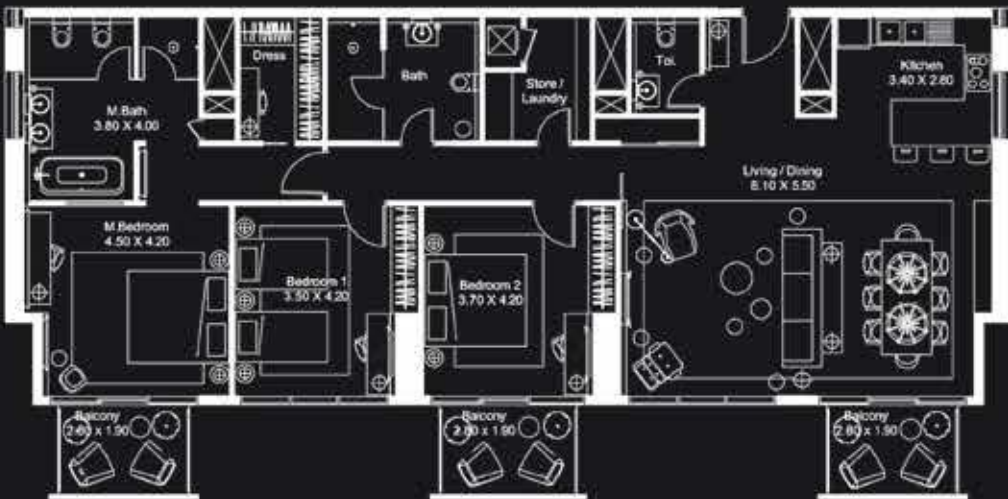
TWO BEDROOM APARTMENT - TYPE 2B1



2B1						
Unit No.	Levels	Views	Actual Area Sq.Ft.			Total Nos.
			Suite	Balcony	Total	
2006	20	Stable / Business Bay	1,387.47	360.70	1,748.17	1
Total Type 2B1						1

* Leasable area and Balcony location may vary from floor to floor.
* Furniture, Wardrobe and Bath Fixtures are Indicative and may vary.

THREE BEDROOM APARTMENT - TYPE 3A1



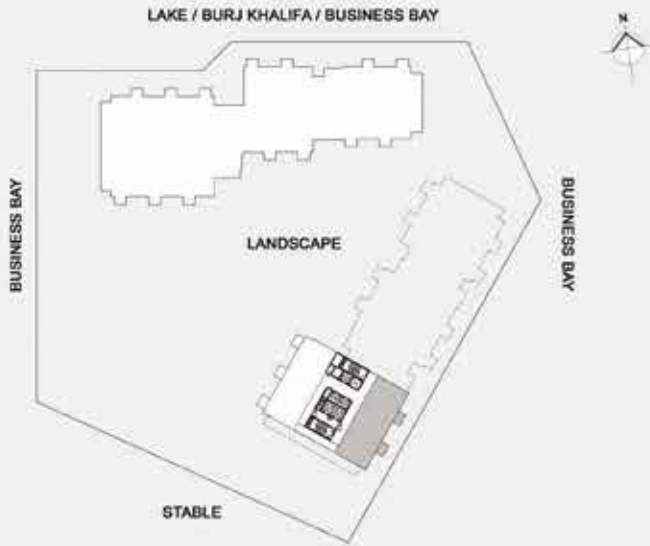
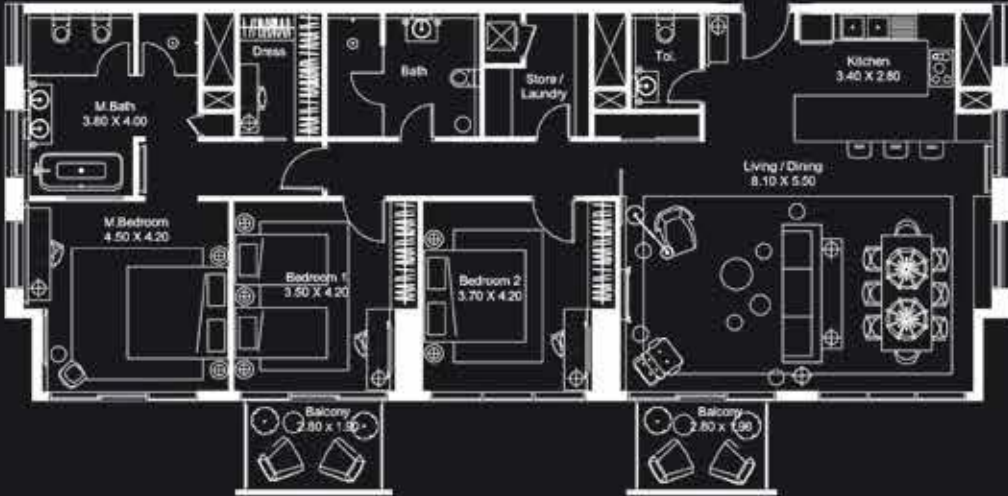
3A1						
Unit No.	Levels	Views	Actual Area Sq.Ft.			Total Nos.
			Suite	Balcony	Total	
2901	29	Stable / Business Bay	1,917.85	190.83	2,097.68	1
Total Type 3A1						1

* Leasable area and Balcony location may vary from floor to floor.
* Furniture, Wardrobe and Bath Fixtures are Indicative and may vary.

2B1 1 No. (20th Floor)

3A1 1 No. (29th Floor)

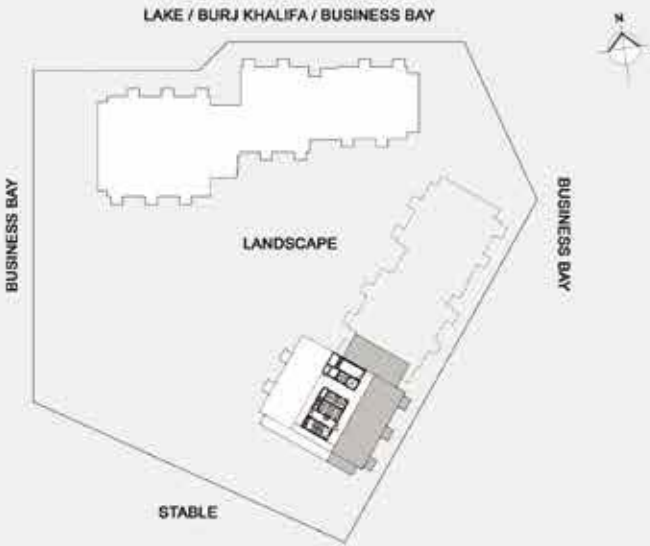
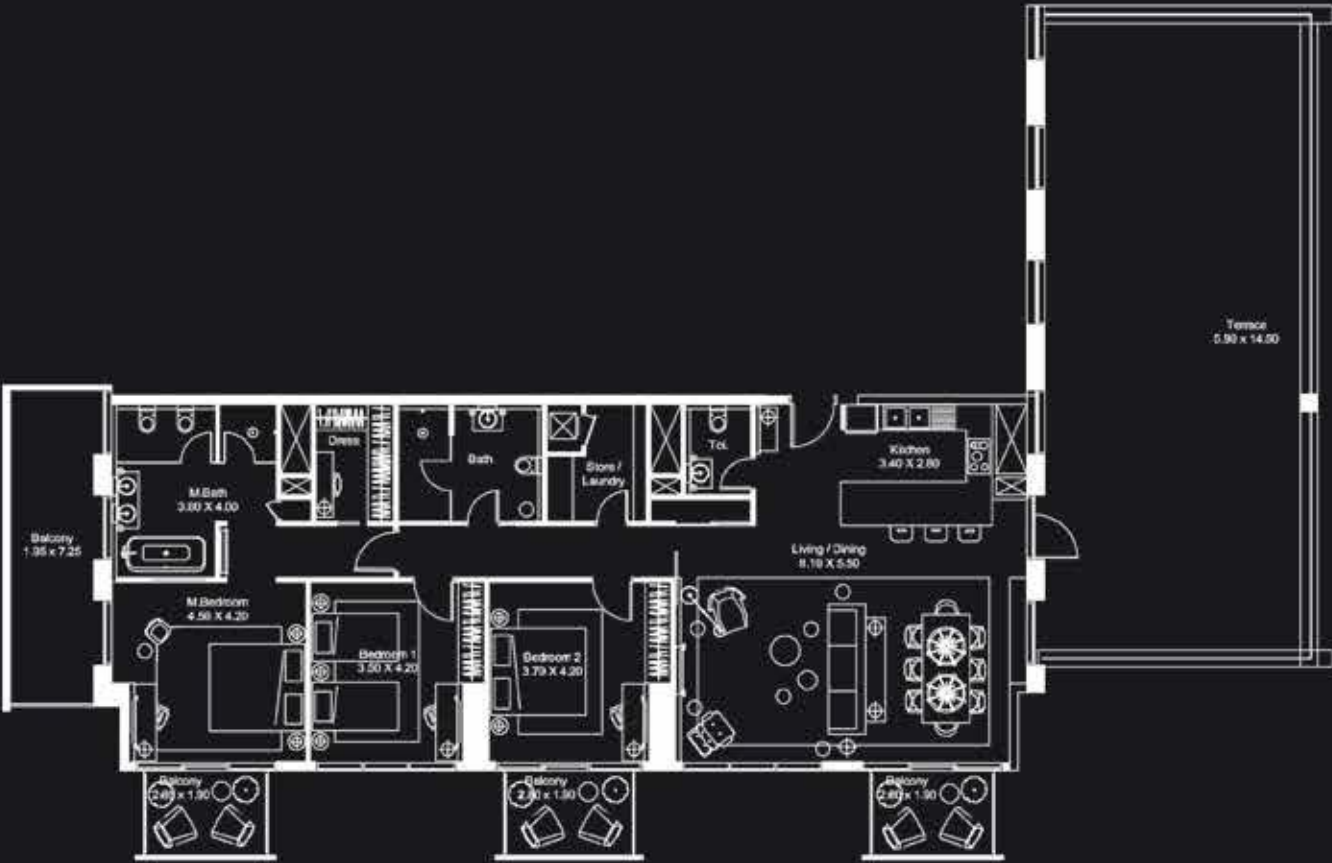
THREE BEDROOM APARTMENT - TYPE 3A2



1C2						
Unit No.	Levels	Views	Actual Area Sq.Ft.			Total Nos.
			Suite	Balcony	Total	
401	4	Landscape / Business Bay / Stable	760.96	132.83	893.73	1
504	5	Stable / Business Bay	761.22	132.83	894.05	1
601	6	Landscape / Business Bay / Stable	760.96	132.83	893.73	1
704	7	Stable / Business Bay	761.22	132.83	894.05	1
801	8	Landscape / Business Bay / Stable	760.96	132.83	893.73	1
904	9	Stable / Business Bay	761.22	132.83	894.05	1
1001	10	Landscape / Business Bay / Stable	760.96	132.83	893.73	1
1104	11	Stable / Business Bay	761.22	132.83	894.05	1
1201	12	Landscape / Business Bay / Stable	760.96	132.83	893.73	1
1304	13	Stable / Business Bay	761.22	132.83	894.05	1
1401	14	Landscape / Business Bay / Stable	760.96	132.83	893.73	1
1504	15	Stable / Business Bay	761.22	132.83	894.05	1
1601	16	Landscape / Business Bay / Stable	760.96	132.83	893.73	1
3A2						
Unit No.	Levels	Views	Actual Area Sq.Ft.			Total Nos.
			Suite	Balcony	Total	
2801	28	Stable / Business Bay	1,917.66	120.56	2,037.61	1
Total Type 3A2						1
2304	23	Stable / Business Bay	761.22	132.83	894.05	1
2401	24	Landscape / Business Bay / Stable	760.96	132.83	893.73	1
2504	25	Stable / Business Bay	761.22	132.83	894.05	1
2601	26	Landscape / Business Bay / Stable	760.96	132.83	893.73	1
Total Type 1C2						23

* Leasable area and Balcony location may vary from floor to floor.
* Furniture, Wardrobe and Bath Fixtures are indicative and may vary.

THREE BEDROOM APARTMENT - TYPE 3A4



3A4						
Unit No.	Levels	Views	Actual Area Sq.Ft.			Total Nos.
			Suite	Balcony	Total	
2701	27	Stable / Business Bay	1,917.66	1,368.74	3,286.79	1
Total Type 3A4						1

* Leasable area and Balcony location may vary from floor to floor.
* Furniture, Wardrobe and Bath Fixtures are indicative and may vary.

3A2 1 No. (28th Floor)

3A4 1 No. (27th Floor)

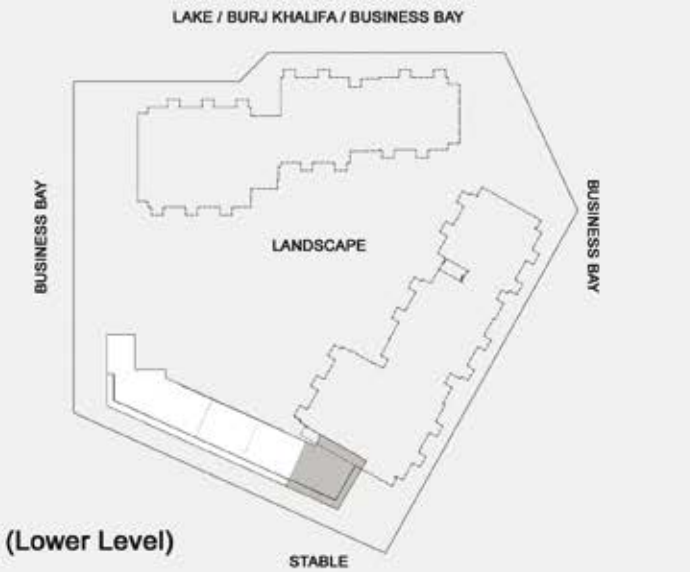
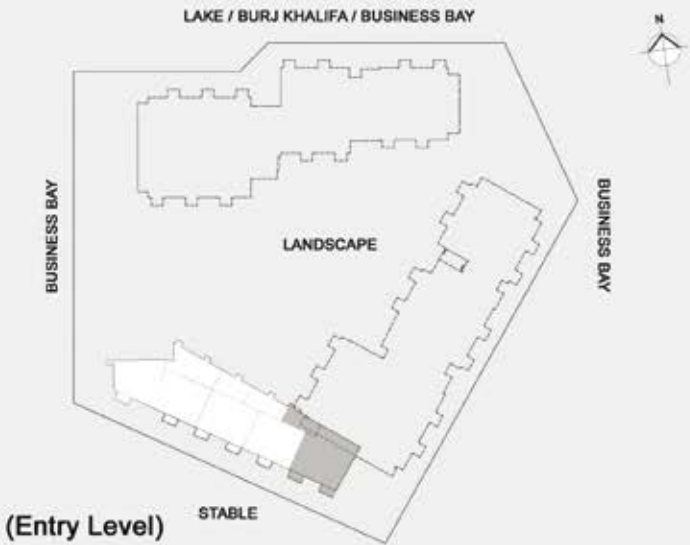
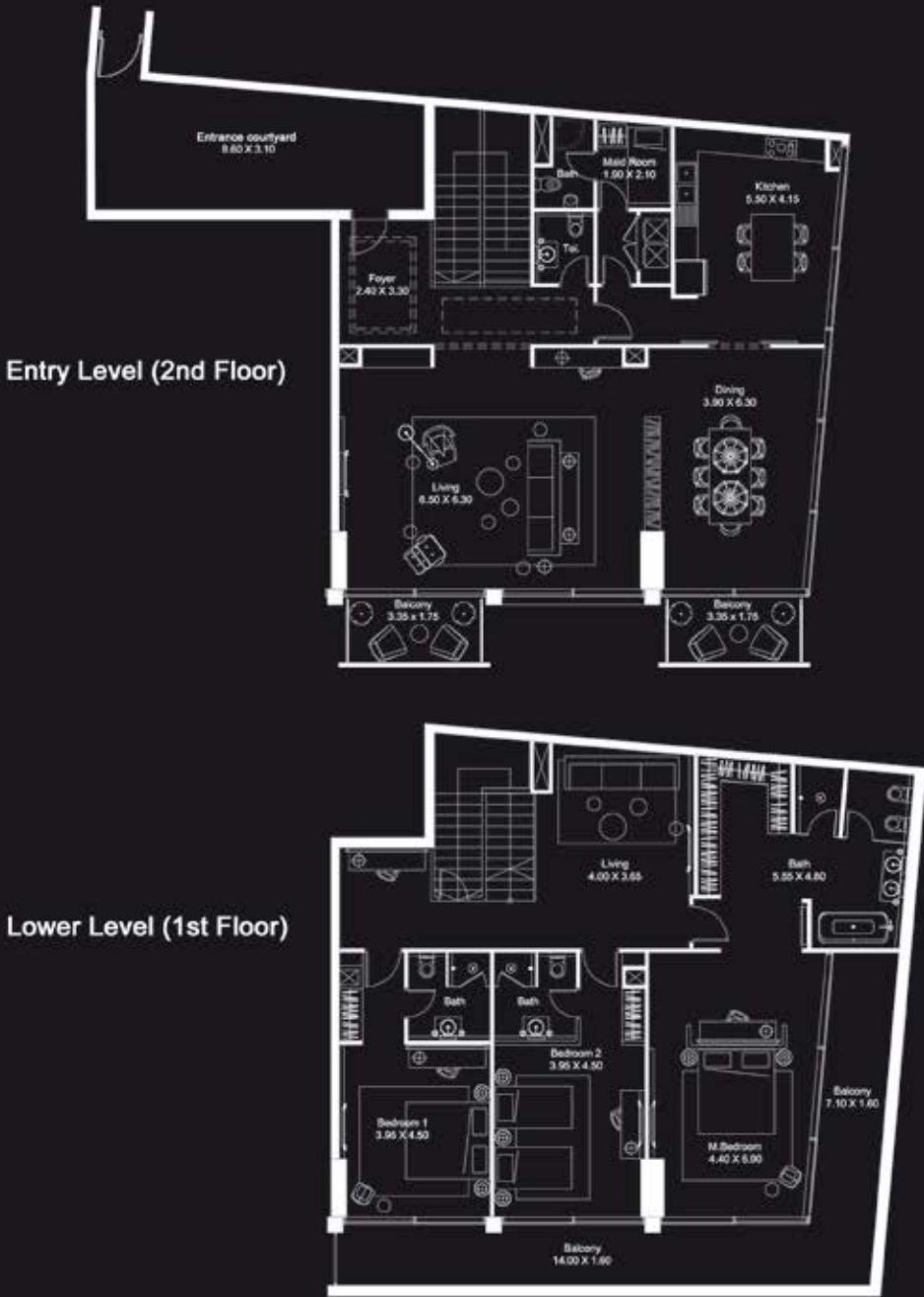
THREE BEDROOM APARTMENT - TYPE 3B1



3B1						
Unit No.	Levels	Views	Actual Area Sq.Ft.			Total Nos.
			Suite	Balcony	Total	
2603	26	Landscape / Business Bay / Stable	1,832.23	164.79	1,997.02	1
Total Type 3B1						1

* Leasable area and Balcony location may vary from floor to floor.
* Furniture, Wardrobe and Bath Fixtures are Indicative and may vary.

THREE BEDROOM APARTMENT - TYPE 3DUP1

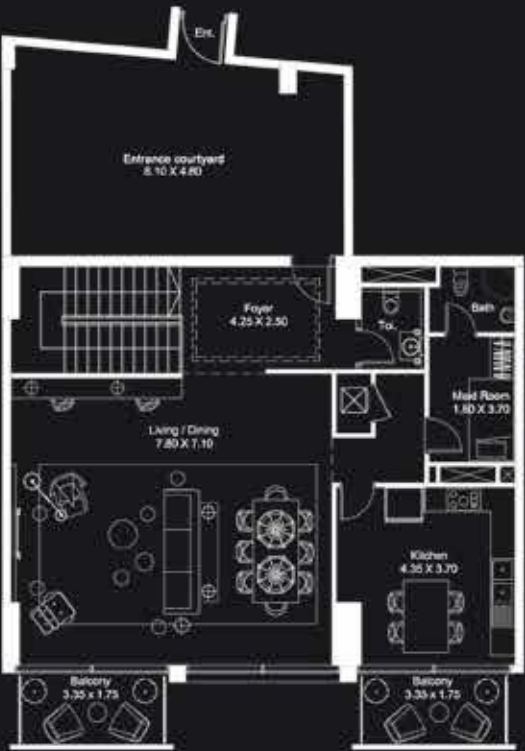


3 DUP1							
Levels	Unit No.	Views	Area (Sq.Ft.)			Total	Total Nos.
			Entry Lvl	Lower Lvl	Balcony / Terrace		
P2.01	1	Stable	1,659.79	1,715.01	942.06	4,316.87	1
Total Type 3DUP1							1

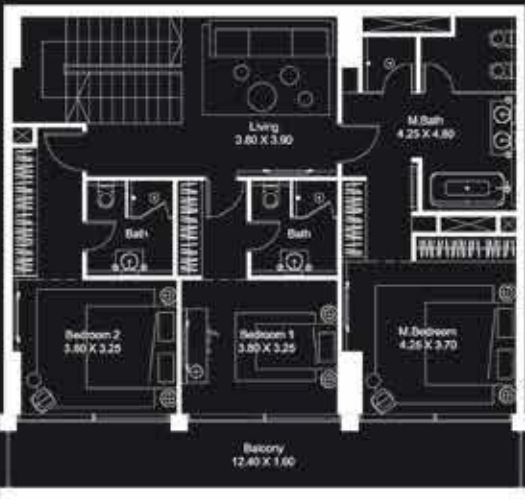
* Leasable area and Balcony location may vary from floor to floor.
* Furniture, Wardrobe and Bath Fixtures are Indicative and may vary.

THREE BEDROOM APARTMENT - TYPE 3DUP2

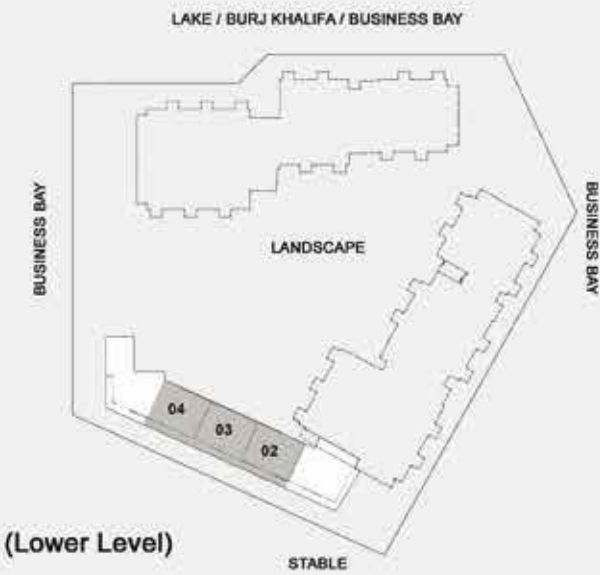
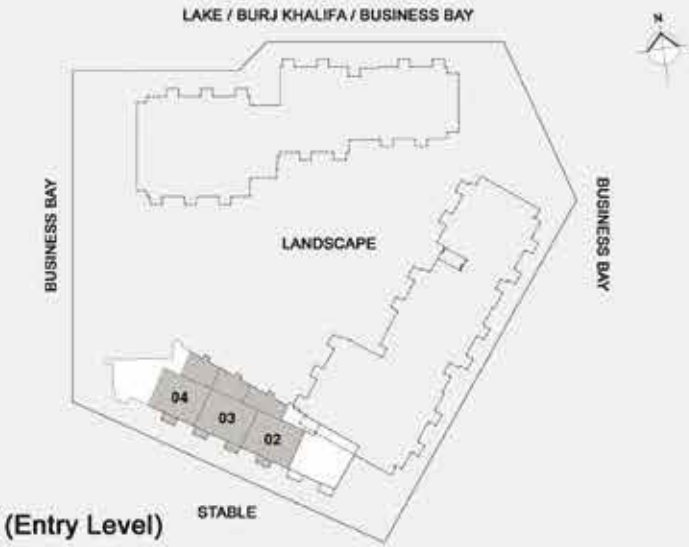
Entry Level (2nd Floor)



Lower Level (1st Floor)



3Dup2 1 No. (2nd & 1st Floor)

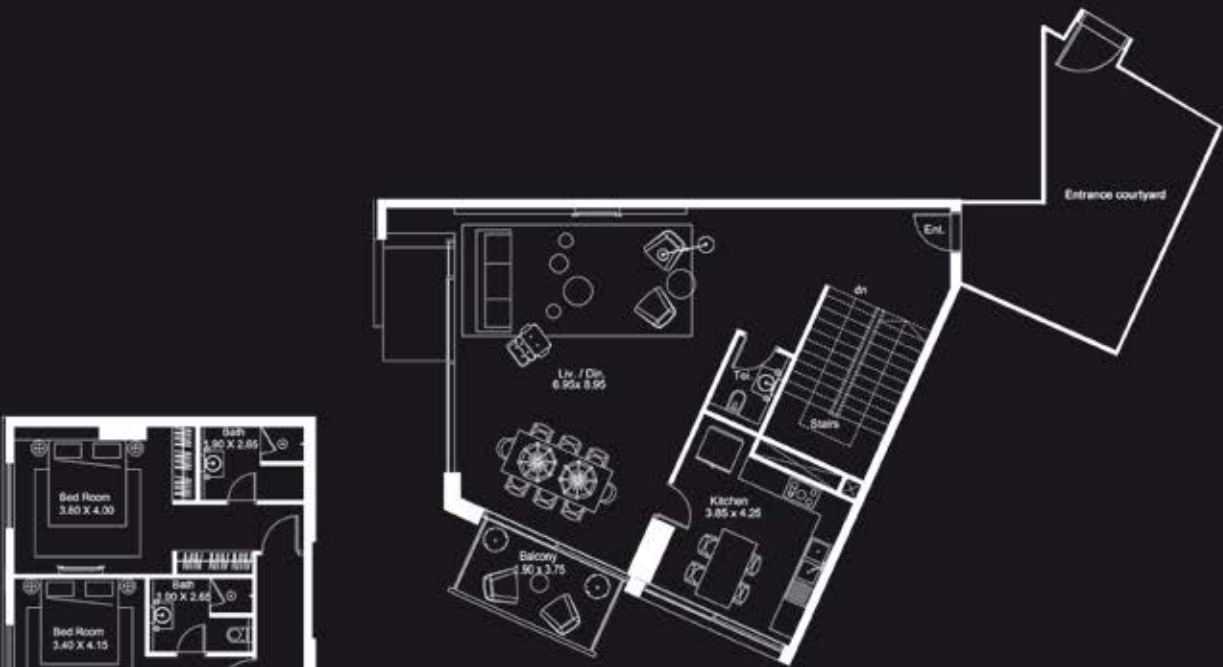


3 DUP2							
Levels	Unit No.	Views	Area (Sq.Ft.)			Total	Total Nos.
			Entry Lvl	Lower Lvl	Balcony / Terrace		
P2-02	1	Stable / Landscape	1,311.47	1,307.60	899.34	3,428.41	1
P2-03	1	Stable / Landscape	1,311.47	1,307.60	841.31	3,460.38	1
P2-04	1	Stable / Landscape	1,311.47	1,307.60	836.26	3,455.32	1
Total Type 3DUP2							3

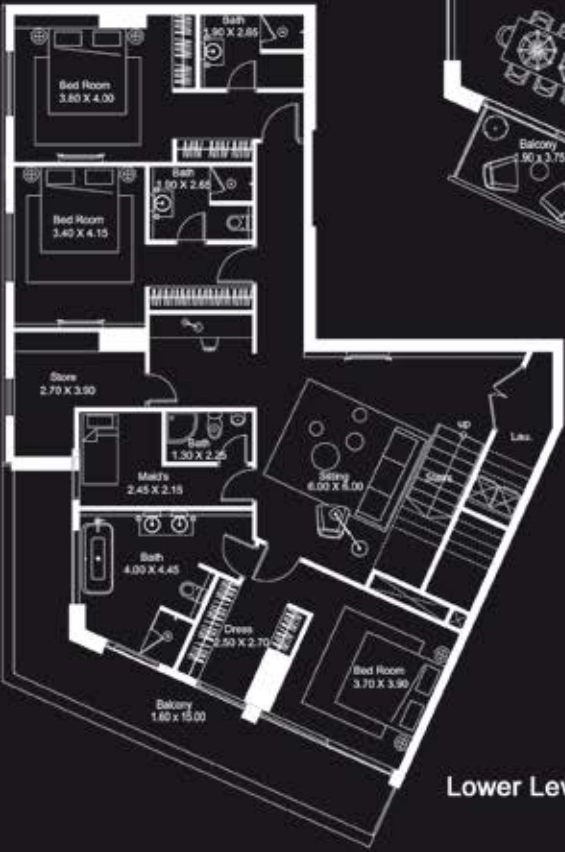
* Leasable area and Balcony location may vary from floor to floor.
* Furniture, Wardrobe and Bath Fixtures are indicative and may vary.

THREE BEDROOM APARTMENT - TYPE 3DUP3

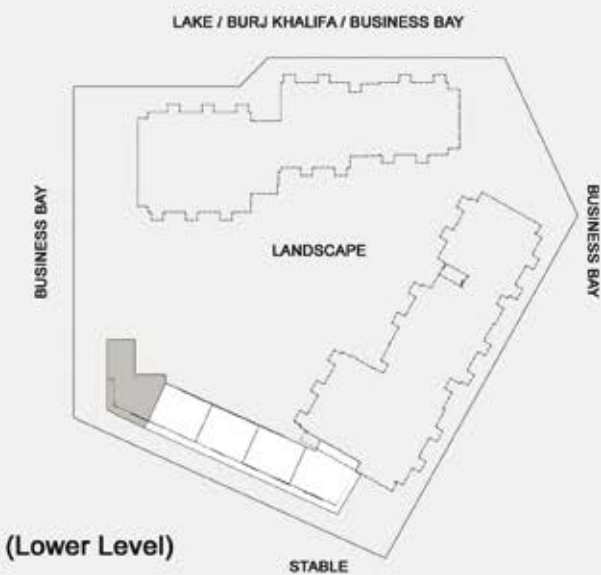
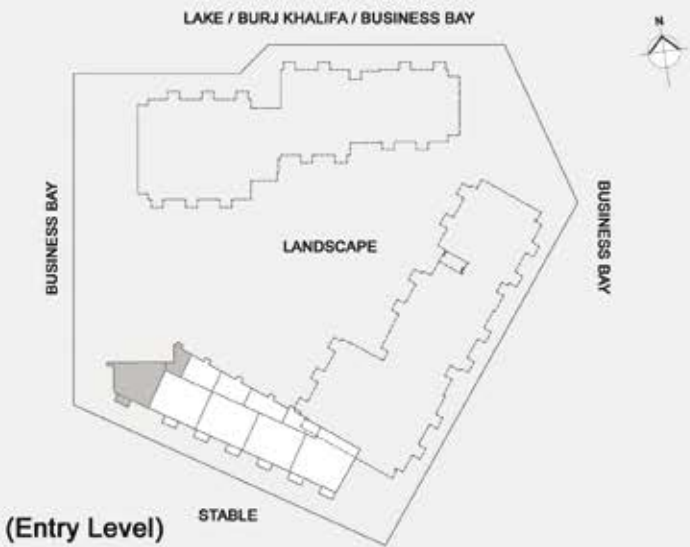
Entry Level (2nd Floor)



Lower Level (1st Floor)



3Dup3 1 No. (2nd & 1st Floor)



3 DUP3							
Levels	Unit No.	Views	Area (Sq.Ft.)			Total	Total Nos.
			Entry Lvl	Upper Lvl	Balcony / Terrace		
P2-05	1	Stable / Landscape / Business Bay	1,122.68	1,875.83	640.24	3,638.74	1
Total Type 3DUP3							1





* Leasable area and Balcony location may vary from floor to floor.
* Furniture, Wardrobe and Bath Fixtures are indicative and may vary.







H O T E L A P A R T M E N T S

FOR MORE INFORMATION PLEASE CONTACT



 +971 55 476 7630
 +971 4 368 7878
 info@afsrealestate.com
 www.afsrealestate.com



 +971 50 674 2020
 +971 4 368 7878
 info@dubricks.com
 www.dubricks.com